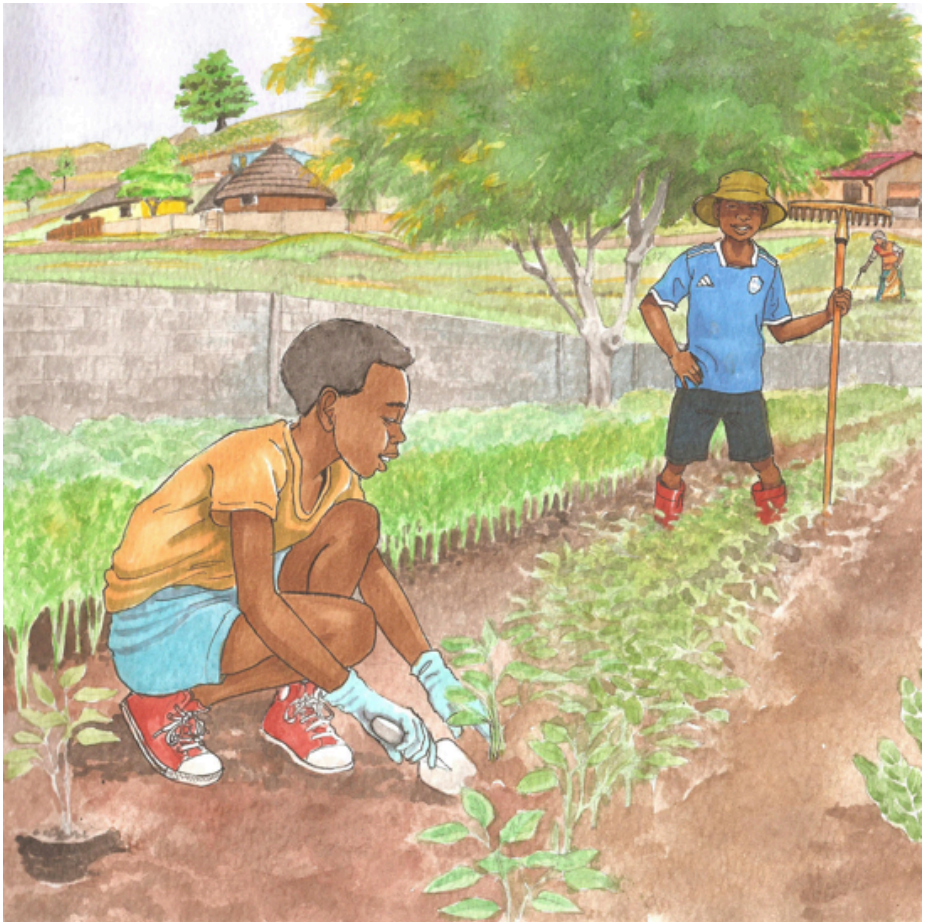




Naka na Nala vha guda nga Jifhasi

Connie Makgabo
Vusi Malindi





Naka na Nala vha ngadeni yavho. Vha khou kunakisa na u ṭavha miroho.

Nala a ri, “Ndi ngani ri tshi khou shuma ngaurali duvhani?”



Naka o takala, “Ri khou shuma nga maanda ngauri ri funa lifhasi lashu na hune ra dzula hone!”

A engedza, “Vhana vha aluwa zwavhuḽi fhethu ho kunaho.”



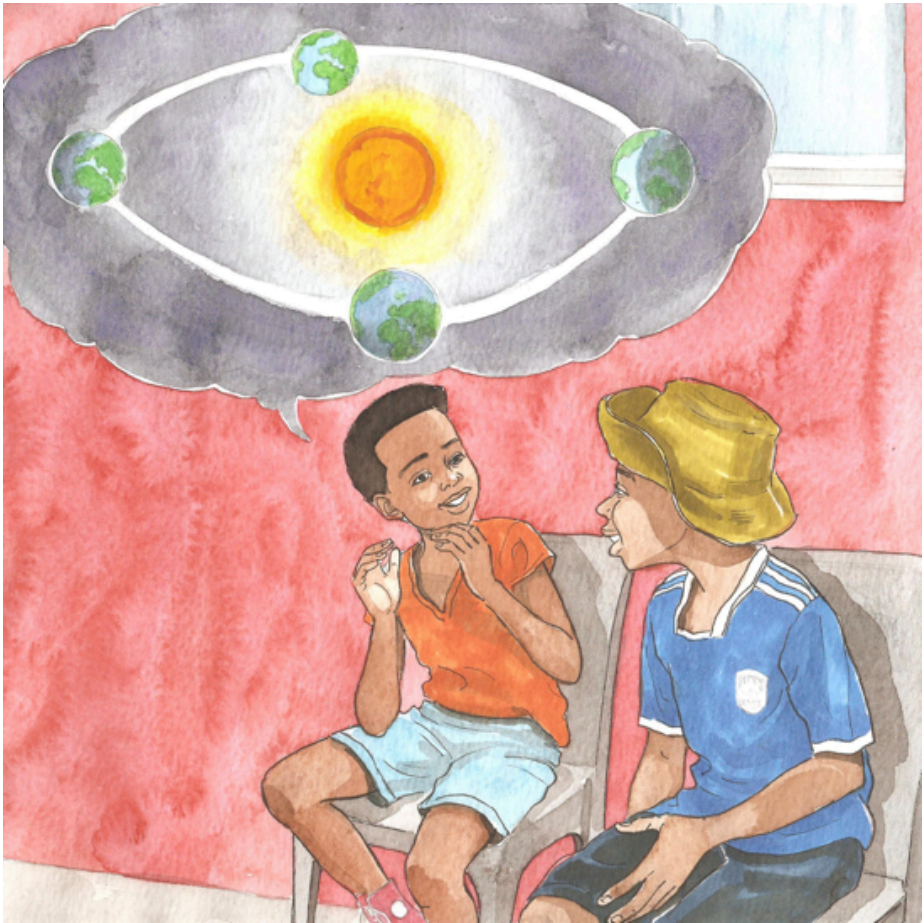
Naka a ri, “Ri ṭavha miroho uri ri ḷe zwiḷiwa zwi re na mutakalo.”

Nala a ri, “U ṭavha miroho zwi dovha zwa vhulunga tshelede.”



“No vha ni tshi khou ri mini nga lifhasi? Mmbudzeni?” Nala u a kombetshedza.

Naka a ri, “Kha ri dzule fhasi ndi ni vhudze zwiñwe nga lifhasi lashu.”



Naka a thoma, “Lifhasi ndi puḽanete ya gumba ine ra dzula khayō. I na vhatḽu vha ṽoḽaho u vha bilḽoni dza malo! Lifhasi ḽi mona ḽuvha.”



Naka a  alutshedza, “Lifhasi lo itwa nga mavu, muya, na maqi. Zwithu zwi tshilaho zwi tshila ntha ha lifhasi ngauri ngomu halo hu a fhisesa.”



Nala u a mu thithisa, “Ndi ngani ri sa tekulelwi nḡa ha lifhasi?”

“Naka a fhindula, “Maanḡa a kokodzelaho fhasi zwithu a ita uri ri si tekulee.”



“Ri nga t̄hogomela hani l̄ifhasi?” Nala u a vhudzisa.

Naka a fhindula, “Ri songo tshikafhadza l̄ifhasi. Ri fanela u vusulusa na u fhungudza mathukhwi.”



Naka u isa phanḁa, “Ri tea u vusulusa mapulasitiki, mabambiri, maboḁelo, na zwikoḁikoḁi. Zwi a konadzea u ita zwithu zwiswa nga zwithu zwo vusuluswaho. Ri laḁesa zwithu zwinzhi.”



Naka u a phetha, “Ri fanela u ṭhogomela ḷifhasi ngauri ri a ḷi ṭoda uri ri tshile.”

Nala u ri, “Kha ri vhuyelele mushumoni!”

—Mbudziso

1. Nala na Naka vha khou ita mini?
Ndi ngani?
2. Nwalani mbuno nna nga puḽanete
yashu.
3. Ndi ngani ri tshi fanela u tḥogomela
ḽifhasi?
4. Zwi amba mini u vusulusa zwithu?
5. Hu nga vusuluswa mini? Nwalani
tsumbo.
6. Ri nga dovha ra ita mini u tsireledza
ḽifhasi?



Ulwazi Lwethu is a Zenex Foundation funded and initiated project to develop a series of graded and leisure African language readers and teacher support materials. This project is targeted at teaching and supporting learners in the Foundation Phase to improve their home language reading and understanding. The readers have been originated in nine African languages in collaboration with Molteno Institute for Language and Literacies, Nelson Mandela Institute for Education and Rural Development, Room to Read South Africa, and Saide. All resources are developed as Open Education Resources (OER).



NELSON MANDELA
INSTITUTE FOR
EDUCATION AND
RURAL DEVELOPMENT



Room to Read®
World Change Starts with Educated Children®

Your attribution should include the following:

Title: Naka na Nala vha guda nga Jifhasi

Author/s: Connie Makgabo

Translator/s: Doris Manyamalala


Illustrator/s: Vusi Malindi

Assurer/s: Tshedza Tlhako

Language: Tshivenda

© Zenex Foundation - Saide 2023

CC BY includes the following elements:

BY  - Credit must be given to the creator

