



# Sello u amba Luambo lwa Zwanda

Tebogo Boikanyo Matshana

Tebogo Matshana



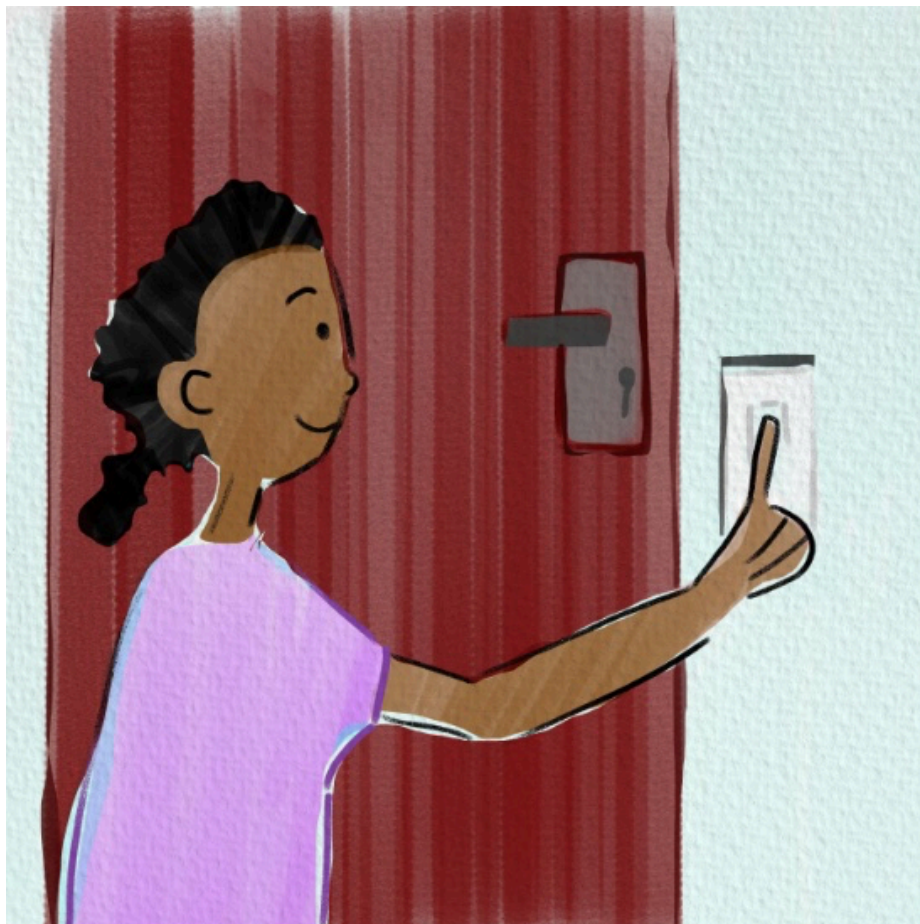


Mukomana wanga Sello, ha pfi nḁevheni.  
U dāvhidzana nga Luambo Iwa Zwaḁa.  
Ri tsh ivuwa, ri a lumelisana.  
“Ndi matsheloni!” ri tshi amba nga zwaḁa.



Sello u amba na khovhe dzashu nga Luambo wa Zwanda musi ri tshi dzi nea zwiliwa.

“Hu rini, no vuwa?” u a vhudzisa.



Arali nda lindela tshifhinga tshilapfu u shumisa kamarani ya u tamba, ndi funga lunzhilunzhi luvhone lwa kamara.

Ndi vha ndi tshi khou vhudza Sello , “Ndi tea u dzhena!”



Ri swiela tshitupu, ra tupula tshene ngadeni.

“Vhonani tshivhungu tshikuku!” ndi tshi amba na Sello nga zwanda.

Ri khou guda nga zwivhungu tshikoloni.



Nga masiari, mme ashu vha ri ruma.

“Ndi khou humbela uri ni renege mafhi na swigiri,  
ndi do baka khekhe,” Vha tshi amba nga  
zwanda.



Ri tshi swika badani, nda thoma u pfuka.

Sello a nkokodza tshanda. A amba nga zwanḁa,  
“Imani! Ni fanela u sedza u thoma!”

Ri tshi swika vhengeleni, ri a fhandekana. Sello u  
ṭoḁa swigiri, nḁe nda ṭoḁa mafhi.



Swigiri i nṭhanṭha lune Sello ha koni u i swikelela.

U humbela thuso kha muthu muhulwane. Fhedzi muthu muhulwane ha ḡivhi Luambo lwa Zwanḡa.

Sello u ṛwala mbudziso kha kubugwana kwawe a re nakwo.





Hayani, ra baka khekhe na mma.

Yo no fholo, ra i nakisa nga khirimu.

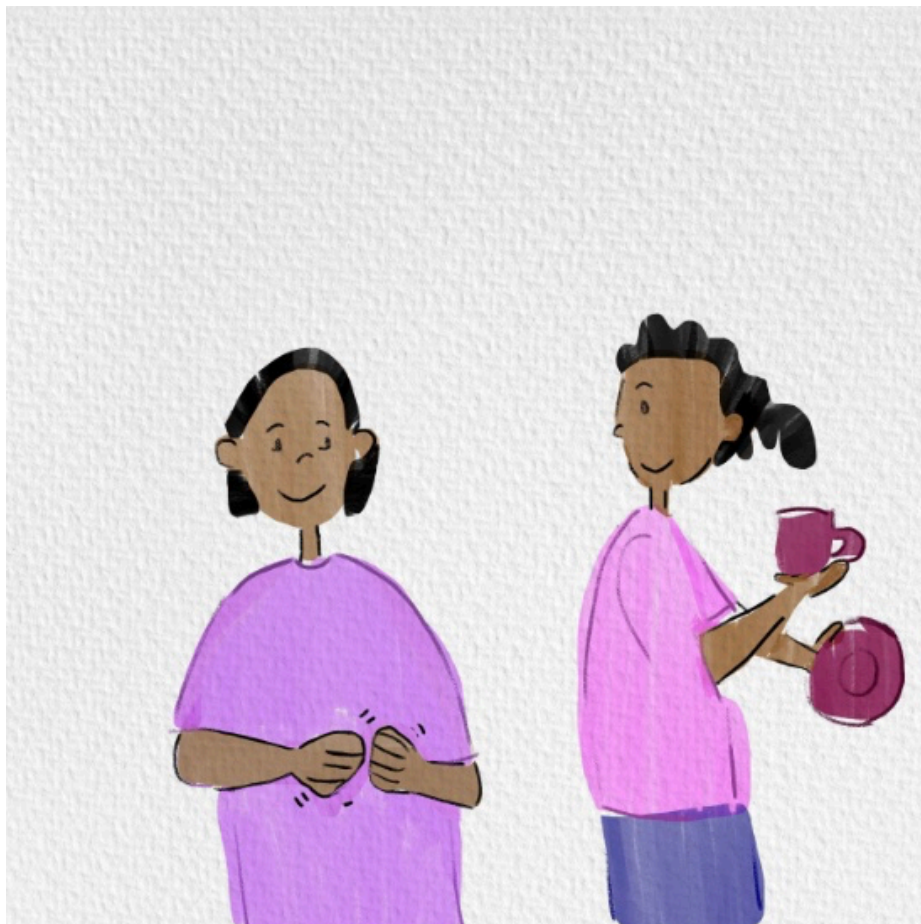
“I khou difha!” Sello u amba nga zwanda o no thetshela khirimu.



Ra ita tie ra nea makhulu.

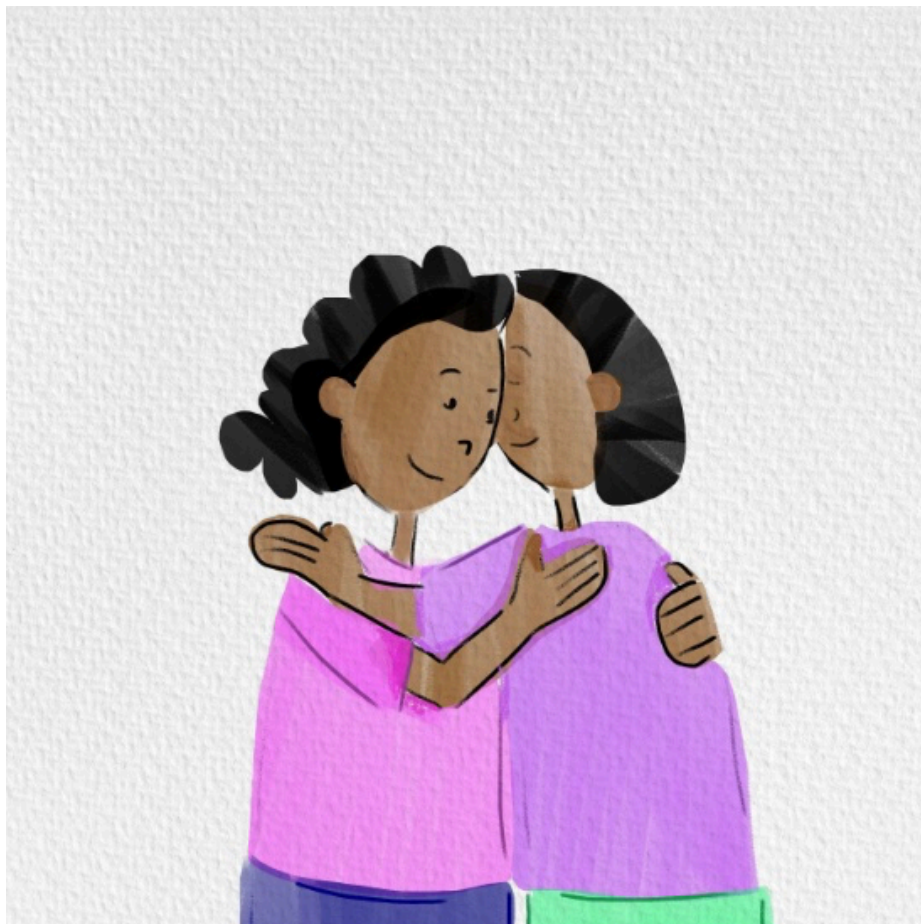
“Ndi a livhuha,” makhulu vha amba nga zwanda.

“Na rine ro takala,” mukomana wanga u ralo nga zwanda.



Ro no ɔa, ra kunakisa ɔtafula.

“Ni do ɔanzwa zwigodelo!” Sello u ralo nga zwanɔa.



Ri sa athu eḡela, ri a kuvhatedzana.

Ra amba nga zwana, “Khofhe dzavhudi.”



Luambo lwa Zwanda

Luambo lwa Zwanda ndi luambo lwa vathu vha sa pfi ndevheni.

Rothe ri nga lu guda.

Lu fana na dziñwe nyambo, fhedzi lwone a lu na mibvumo.



Ulwazi Lwethu is a Zenex Foundation funded and initiated project to develop a series of graded and leisure African language readers and teacher support materials. This project is targeted at teaching and supporting learners in the Foundation Phase to improve their home language reading and understanding. The readers have been originated in nine African languages in collaboration with Molteno Institute for Language and Literacies, Nelson Mandela Institute for Education and Rural Development, Room to Read South Africa, and Saide. All resources are developed as Open Education Resources (OER).



NELSON MANDELA  
INSTITUTE FOR  
EDUCATION AND  
RURAL DEVELOPMENT



Room to Read®  
World Change Starts with Educated Children®

Your attribution should include the following:

Title: Sello u amba Luambo Iwa Zwanḡa

Author/s: Tebogo Boikanyo Matshana

Translator/s: Doris Manyamalala

Illustrator/s: Tebogo Matshana


Assurer/s: Tshedza Tlhako

Language: Tshivendḡa



© Zenex Foundation - Saide 2023

CC BY includes the following elements:

BY  - Credit must be given to the creator

