



Tebello Nyokong, Ramahlale wa go lwa le kankere

Nomsa Angelina De Wee
Simon Mokoena



Tebello Nyokong ke setsebi se bohlokwa sa tša
Mahlale sa Moafrika Borwa.

Tsebo ya gagwe e thuša go alafa le go phološa
batho baō ba lwalago kudu.



Tebello o godišitšwe ke koko le rakgolo ba gagwe kua Lesotho. Ba mo godišitše gabotse.

Kgodišong ya gagwe o be a diša dinku. O be a eya sekolong ka lešatši le, gomme le le latelago a ye madišong. Ke ka fao a thomilego sekolo ka gona.



Ge Tello a be a dišitše dinku, o ile a lemoga
diphoofolo le mehlare ye mengwe kua nageng.

Tello o be a na le kgahlego lefaseng leo le bego le mo
dikologile. E be e le ngwana wa go rata go tseba.

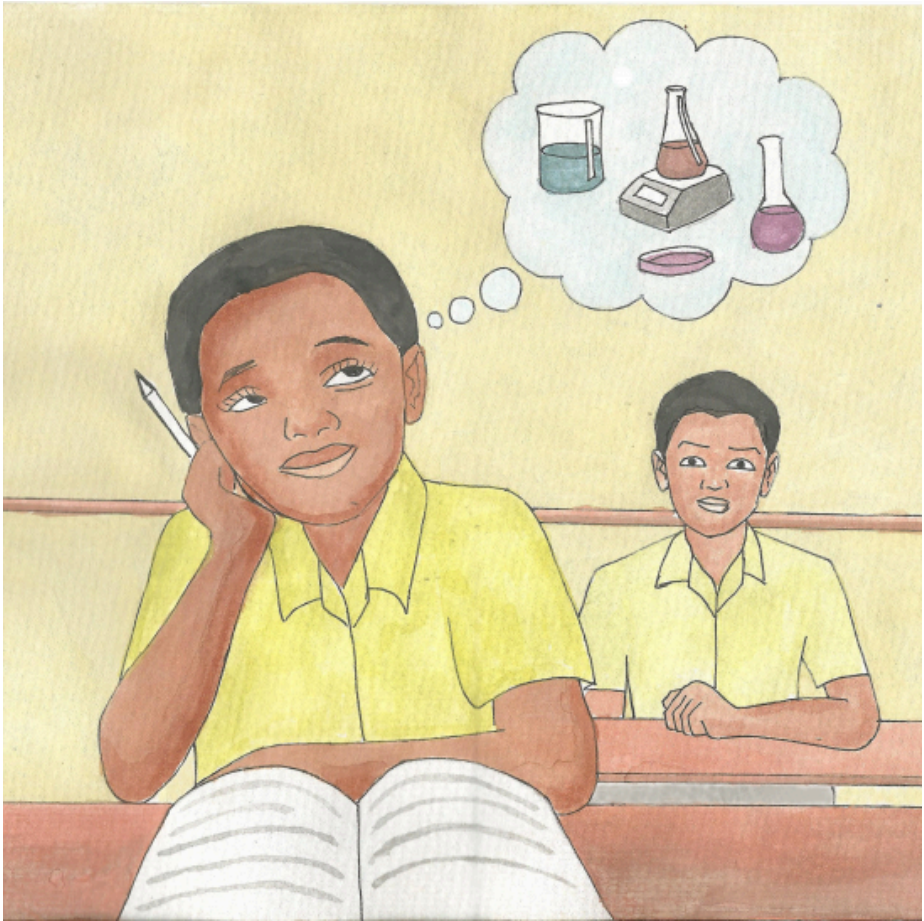
Go golela dinagamagaeng go mo rurile tše dintši
mabapi le tlhago.



Tebello o be a rata go ithuta Thutamahlale sekolong.

O ile a hwetša ditšhošetšo tša gore a se ke a leka ka lebaka la gore Thutamahlale e bothata kudu. O boditšwe le gore ke thuto ya bašemane e sego ya basetsana.

Mathomong o ile a theeletša ditšhošetšo tše. Bagwera ba gagwe sekolong ba be ba dira dithuto tše dingwe.



Efela Tebello o be a rata Thutamahlale. O be a tshepa gore o tla e kgona.

Mafelelong o ile a dumelelwa go ithutela yona Thutamahlale. O be a thabile ebile a e kgona kudu.

O thomile go ithuta Thutamahlale mengwaga ye mebedi pele a feleletša marematlou.



Tebello o ile a šoma ka maatla gore a fihlelele maemong a bana bao ba bego ba le phapošing ya Thutamahlale.

O be a le bohlale, a na le phegelelo ebile a rata go ithuta.

Mo mengwageng ye mebedi ya go ithuta Thutamahlale sekolong se se phagamego, Tebello o ile a tšwelela gabotse ntle le pelaelo.



Chemistry ke karolo ye nngwe ya tsebo ya Thutamahlale. Yona e be e le mmamoratwa wa Tebello ka mo lefapheng la tša mahlale.

Diteko tša *Chemistry* di dirwa laporatoring ya saense.

Tebello o be a tseba gore o nyaka go ithutela *Chemistry* ge a eya yunibesithi.



Morago ga go tšwelela mphatong wa marematlou, Tebello o ile a ya yunibesithing ya Lesotho. O be a ithutela tikrii ya Thutamahlale.

E be e le moithuti yo bohlale a bile a šoma ka maatla. O be a fetša nako ye ntši a le ka laboratoring a dira diteko tša *Chemistry*.

O hweditše dipoelo tša go phadima kudu. Dipoelo tšeo tša dira gore a hwetše thekgo ya mašeleng a go ithutela go tšwela pele nageng ya Canada.



Le ge Tebello a be a rata dithuto tša gagwe tša mahlale, o ile a nyamišwa ke go tlogela lapa la gabo le meloko ya gabo ka mono Afrika.

O be a se na kgetho, o ile Canada ka ge a be a nyaka go dira dinyakišišo tša Thutamahlale.

O be a nyaka go ba setsebi se segolo sa Thutamahlale.



Lefaseng la Canada, Tebello o ile a kopana le bagwera ba bafsa.

Ba be ba bolela maleme a go fapafapana efela leleme la Seisemane e be e le lona mokgokaganyi wa bona. Ba be ba kgona go kwana ge ba boledišana.

Kua Canada, lehlwa le be le apeša ditoropo go no swana le dithabeng tša Lesotho.

Ga se gwa tšea nako ye telele, ke ge Tebello a hweditše thekgo ye nngwe gape ya mašelang ya go tšwetša dithuto tša Thutamahlale pele.



Ke ge a eya yunibesithing go la Amerika. Gona yunibesithing yeo, Tebello o ile a tsepelela nyakišišong ya saense ya go lwantšha malwetši a kotsi.

Ka morago ga mengwaga ye mentši ya go ithuta, dinageng tša ka ntle, Tebello a boa gae, Afrika Borwa. O be a nyaka go aba tsebo ya gagwe le go thuša batho ba gabo.

Tebello o be a itshepa ebile a dumela gore ga go na seo se ka emago tseleng ya gagwe.



Lehono le, Tebello ke Moprofesara wa tša Mahlale. Ke mofahloši yunibesithing gape o na le laboratori ya gagwe ya Saense.

O dira dinyakišišo ka ditsela tše difsa tša go thuša batho ka malwetši a šoro, kudu batho ba Afrika. Mošomo wa Moprofesara Nyokong o oketša tsebo ya go alafa le go phološa batho bao ba swerwego ke bolwetši bja kankere.



Mošomo wa gagwe o thuša go tšweletša tshedimošo ye bohlokwa le go lwantšha malwetši a kotsi.

Bophelo bja gagwe bo bontšha bohlokwa bja go ba le boitshepo le go se hwe matwa. Lefase ka bophara, le nyaka boramahlale ba go swana le Moprofesara Tebello Nyokong!

—Dipotšišo

1. Efa maina a dinaga tše tharo fao Tebello a ithutilego gona. Di hwetše godimo ga mmepe.
2. Ge a be a sa le ngwana, na Tebello o ile a theeletša dipolelo tše batho ba bego ba di bolela ka seo a se ratago? Na o tseba bjang?
3. Ke ka lebaka la eng ba be ba re a se ke a ithutela Thutamahlale? Na wena o dumelelana le bona?

—Dipuku tšeo di lego mo tlhahlamanong ye

- Andile Mji
- Asnath Mahapa
- Bongani Mayosi
- Charlotte Maxeke
- Mmantsane Moche Diale
- Mulalo Doyoyo
- Tebello Nyokong
- Tshilidzi Marwala

Kanegelo ye e hlamilwe le go ngwalwa ka Sesotho, e le karolo ya projeke ya Zenex Ulwazi Lwethu ya 2020 ya dipuku tša go bala.



Ulwazi Lwethu is a Zenex Foundation funded and initiated project to develop a series of graded and leisure African language readers and teacher support materials. This project is targeted at teaching and supporting learners in the Foundation Phase to improve their home language reading and understanding. The readers have been originated in nine African languages in collaboration with Molteno Institute for Language and Literacies, Nelson Mandela Institute for Education and Rural Development, Room to Read South Africa, and Saide. All resources are developed as Open Education Resources (OER).



NELSON MANDELA
INSTITUTE FOR
EDUCATION AND
RURAL DEVELOPMENT



Room to Read®
World Change Starts with Educated Children®

Your attribution should include the following:

Title: Tebello Nyokong, Ramahlale wa go lwa le kankere

Author/s: Nomsa Angelina De Wee

Translator/s: Dikeledi Queen Shai

Illustrator/s: Simon Mokoena

Assurer/s: Connie Makgabo

Language: Sepedi



© Zenex Foundation - Saide 2023

CC BY includes the following elements:

BY  - Credit must be given to the creator

