



U tsireledzea kha inthanethe

Patricia Ndlovu

Sibusiso Khumalo

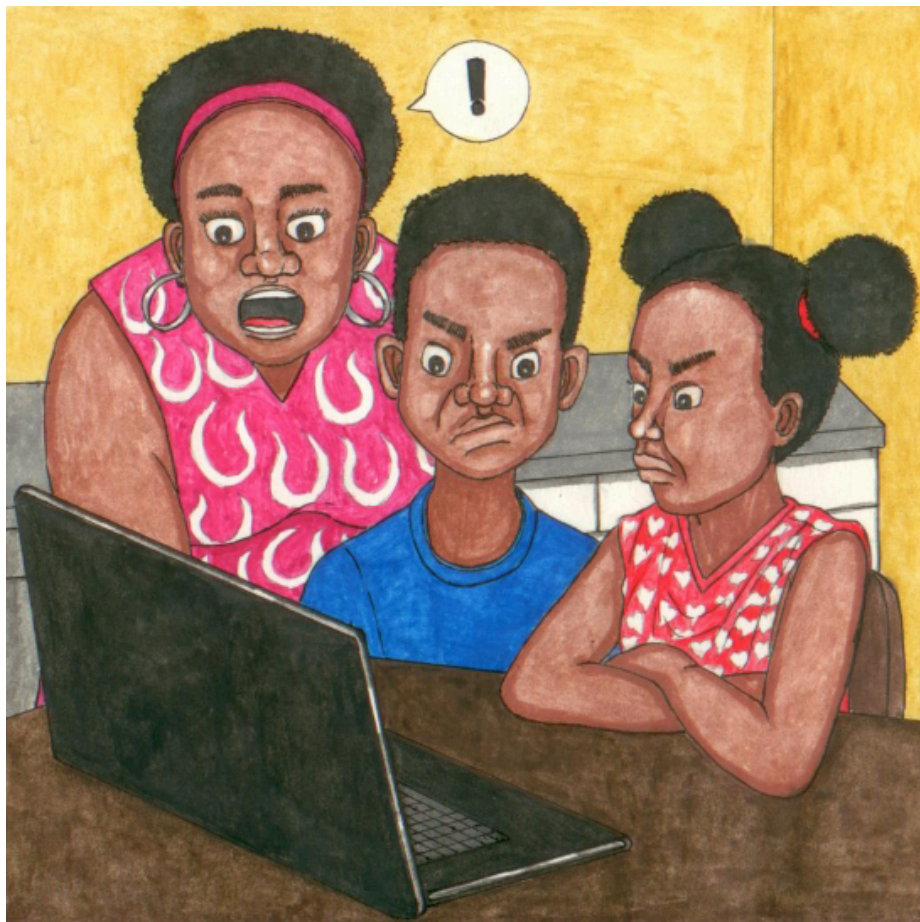




Inthanethe i ita uri ni gude, u tamba mitambo, u renga, na u amba na khonani dzaṅu u fana na ṅdila ine na zwi ita ḡuvha na ḡuvha.

I nga vha fhethu ha khombo kha vhana.

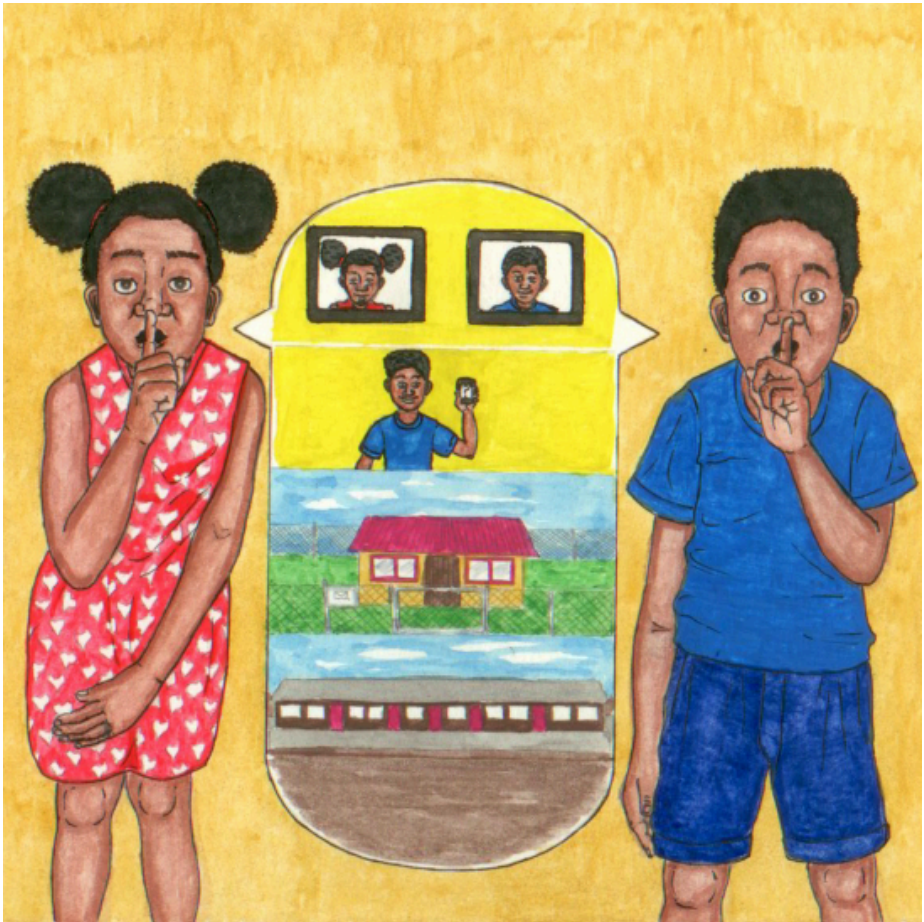
Ndi ngauri hu na vhathu vhane vha shumisa inthanethe vhe na zwiitisi zwivhi.



Vhathu vhavhi vha shumisaho inthanethe ndi:

- Mbava dza vhuṅe.
- Vhatambudzi vhane vha ḡo ni shonisa, kana u ni tsitsa tshirunzi.
- Vhane vha ḡidzumba kha inthanethe vha vhumba vhushaka na inwi nga tshipikwa tsha u ni tambudza.

Ni ḡo vhala zwinzhi kha masiaṭari a tevhelaho.



U dzula no tsireledzea kha mbava dza vhuṅe, ni songo dzhenisa haya mafhungo kha inthanethe:

- Dzina ḷa vhukuma.
- Nomboro dza luṅingo.
- Ḑiresi ya hayani.
- Žwidombedzwa zwa muṅa waṅu.
- Hune na dzhena hone tshikolo.

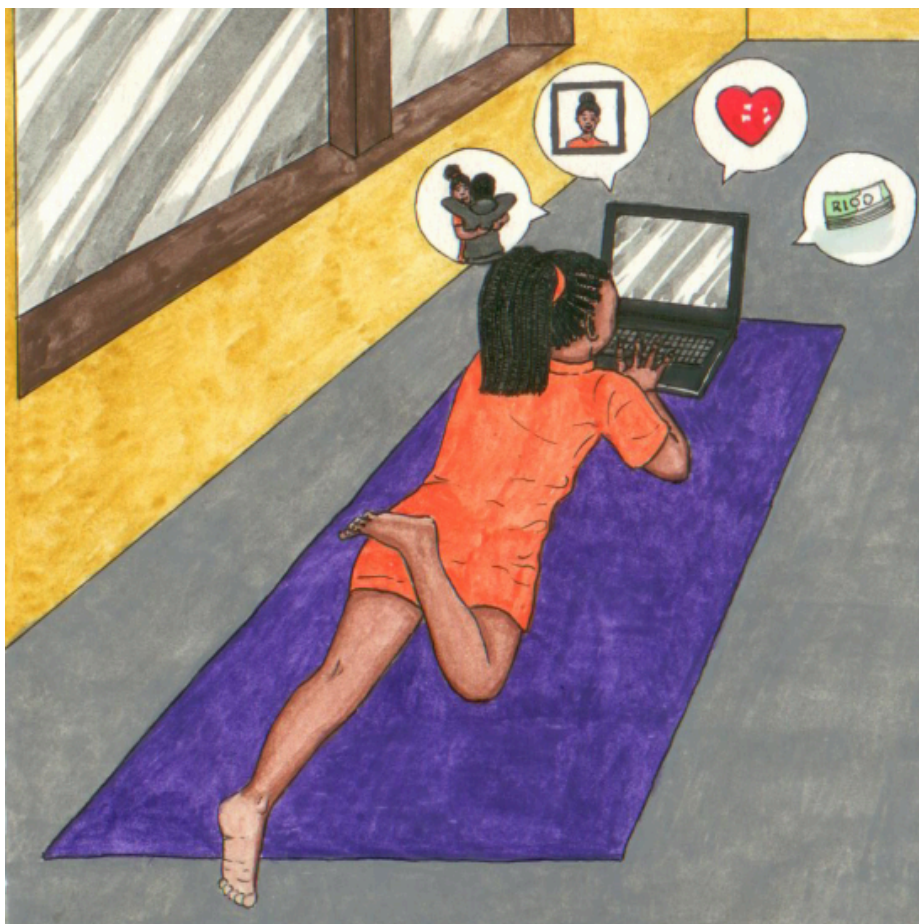
Haya mafhungo a leludzela mbava dza vhuṅe uri dzi ḑiite inwi kha inthanethe.



Muthu ane a shengedza kha inthanethe ndi ane:

- A amba mazwifhi nga inwi.
- A ni kolela.
- A wanala kha zwirathisi zwa mafhungo, kha zwa vhudavhidzani, kha zwa mitambo, na kha dziimeiji.

Vhudzani muthu ane na mu fulufhela arali ni tshi khou tambuzwa vhutshiloni kana kha inthanethe.



Vhane vha ḡdzumba kanzhi ndi vhaaluwa. Vha nga lingedza:

- U wana zwidombedzwa zwaḡu.
- Uri ni vha fhulufhele.
- U ḡita vhavhuya, na u ita u nga vha na ndavha na inwi na uri vha vhilaela nga ha inwi.
- U humbela tshinepe tshaḡu.
- U ri ni ite zwithu zwa khombo.

Dilindeni kha vhathu musi ni kha inthanethe.



A ri wani vhathu vhavhi fhedzi kha inthanethe. Hu dovha ha vha na mafhungo a mazwifhi na a huvhadzaho.

Ni songo fulufhela zwithu zwoṭhe zwine na zwi vhala kha inthanethe.

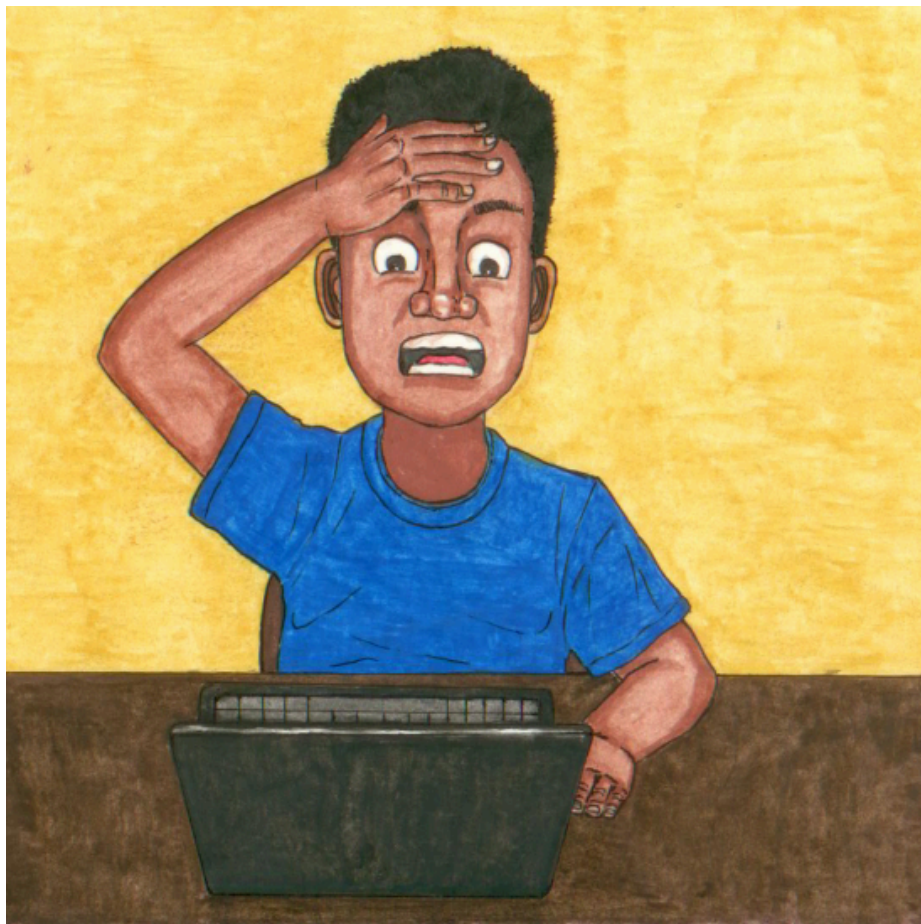
Humbelani mubebi kana mudededzi a ni thuse u vhona arali mafhungo a re kha inthanethe e ngoho kana e mazwifhi.



Musi ni tshi khou shuma kha inthanethe:

- Ivhani na vhudifhinduleli.
- Ṭhonifhani vhañwe.
- Fhaṭuwani.

Arali na ita zwenezei zwithu zwoṭhe, ni ḡo tsireledzea kha inthanethe.



Musi ni tshi phosta mafhungo na zwinepe kha inthanethe, ni ɔo ɔifhindulela kha zwine na zwi posta.

Humbulani ni sa athu phosta.

Mafhungo kana zwifanyiso zwine na zwi phosta zwi nga shumiswa luvhi kha inwi kana muɔa wa haɔu.

Inthanethe a i hangwi zwe na zwi phosta, naho na zwi diɔitha.



Diṭhonifheni ni ṭhonifhe na vhane vha shumisa inthanethe: nga zwine na amba, zwine na phosta, na zwine na ita.

Ni songo vha na ṭhoni dza u vhudza vhabebi vhaṅu nga zwine zwa itea kha inthanethe, kana muthu ane na ṭangana nae kha inthanethe.



Ni dzule no fhatuwa musi ni kha inthanethe. A si vhothe vhane vha vhonala vhe khonani dzaṅu, vha re khonani dzaṅu dza vhukuma.

Shumisani mafhungo a re kha heyi bugu u ni livhisa u ri ni dzule no tsireledzea kha inthanethe.

—Dzimbudziso

1. Bulani zwithu zwivhili zwine na nga zwi ita kha inthanethe.
2. Bulani mifuda miraru ya vhatu vhane vha ita zwithu zwivhi kha inthanethe.
3. Ndi ngani zwi zwa ndeme u hambela muthu muhulwane uri a ni thuse musini tshi khou shumisa inthanethe?
4. Nwalani zwithu zwivhili zwine a no ngo tea u zwi dzhenisa kha inthanethe.
5. Ni fanela u ita mini musini tshi pfa ni songo tsiredzea kha inthanethe?

Heyi bugu ndi inwe i re kha mutevhe wa bugu nna dzi ambaho nga thero ya thekinolodzhi ya khomphyutha.

Bugu ya tshitori yo sikwa na u nwalwa sa tshipida tsha thandela ya matheriala ya u vhala ya Zenex Ulwazi Lwethu nga 2021.



Ulwazi Lwethu is a Zenex Foundation funded and initiated project to develop a series of graded and leisure African language readers and teacher support materials. This project is targeted at teaching and supporting learners in the Foundation Phase to improve their home language reading and understanding. The readers have been originated in nine African languages in collaboration with Molteno Institute for Language and Literacies, Nelson Mandela Institute for Education and Rural Development, Room to Read South Africa, and Saide. All resources are developed as Open Education Resources (OER).



NELSON MANDELA
INSTITUTE FOR
EDUCATION AND
RURAL DEVELOPMENT



Room to Read®
World Change Starts with Educated Children®

Your attribution should include the following:

Title: U tsiredzea kha inthanethe

Author/s: Patricia Ndlovu

Translator/s: Doris Manyamalala


Illustrator/s: Sibusiso Khumalo

Assurer/s: Tshedza Tlhako

Language: Tshivenda

© Zenex Foundation - Saide 2023

CC BY includes the following elements:

BY  - Credit must be given to the creator

