



Lihle le Lwandle ka marega

Ndivhuho Mutsila

Vusi Malindi





Lihle le Lwandle ba sepela ka pese go yo etela malome wa bona Lesotho.

Ke la mathomo ba eya nageng ye nnyane ya dithaba ka pese.



Lihle le Lwandle ba be ba bona mafelo ge ba nametše pese. “Go wele lehlwa mo gohle!” Lwandle a realo.

“Le swana le kobo ye koto ye tšhweu yeo e khupeditšego dilo ka moka,” Lihle a dumela.



“Ke leboga gore pese ye e na le seruthufatši ka gare!” Lwandle a realo.

“Ee, go tonya kudu ka ntle. Marega a mo a botšididi kudu,” Lihle a realo.



“Marega a Lesotho a tonya kudu go feta kua gae Limpopo,” Lihle a tšwela pele.

“Ke tshepa gore ke pakile diaparo tšeo di lekanego tše borutho,” Lwandle a realo.



Pese e rile go fihla, Lihle le Lwandle ba bona malome gomme ba mo emišetša matsogo. O apere jase ye kgolo, sekhafo le mongatse.

“Ee! Ee!” Ke Lwandle a thothomela ge a fologa.



Dijesi tša bona ke tše bofego go ba šireletša
botšididi bja mo.

Malome o ba tletše le dikobo tše dibotse tša
borutho.

“Le amogetšwe sehlang sa marega!” a ba
dumediša.



“Le hlokomeleng moo le gatago gona gobane go na le aese ya go thedimošā,” a ba lemoša.

Ba ile ba feta mohlape wa dinku tša boya bjo bo koto di kgobokane di itšhireletša phefo.



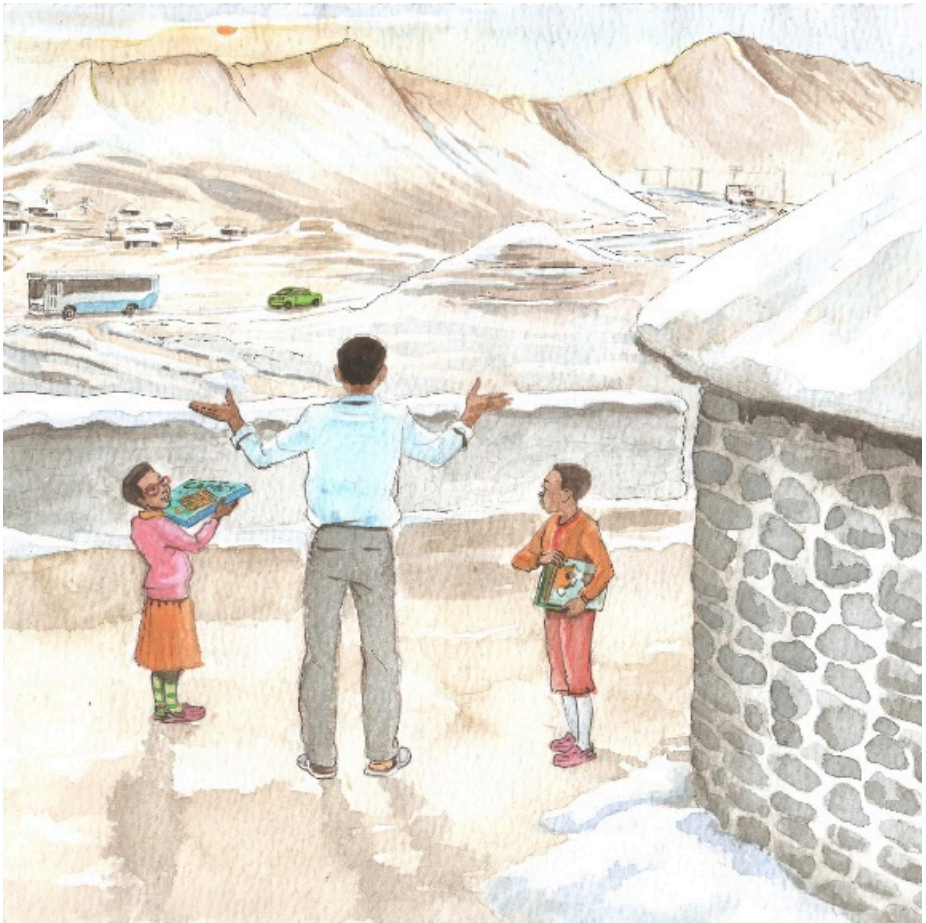
Ka fase ga lehlwa, bjang bo omile ebile ke bjo bo sotho. Diphoofole ga di na bjang bja go fula.

Mehlare ye mentši ga e sa mela goba e a hwa marega.



Lihle le Lwandle ba duletše mollo sebešong ka sethopeng sa malome.

O ba fa nama ya kgomo ya go apewa le ditapole. “Dijo tše tša setšo di tla ruthetša mebele ya lena,” a realo.



“Marega, letšatši le diega go hlaba la dikela ka pela. Re dula ka dintlong nako ye telele,” malome a realo.

“Re tla bala dipuku le go raloka dipapadi!” Lihle le Lwandle ba bolela ka nako e tee.

—Dipotšišo

1. Na Lihle le Lwandle ba mo kae?
Hwetša lefelo leo mmepeng.
2. Ke sehla sefe se go bolelwago ka
sona?
3. Hwetša mantšu a mararo a go
hlaloša sehla se.
4. Efa diaparo tše 4 tša marega.
5. Ekaba marega a Lesotho a swana le
marega a moo o dulago gona?
Hlaloša.
6. Ke marega afe ao o a ratago kudu?
Ka lebaka la eng?



Ulwazi Lwethu is a Zenex Foundation funded and initiated project to develop a series of graded and leisure African language readers and teacher support materials. This project is targeted at teaching and supporting learners in the Foundation Phase to improve their home language reading and understanding. The readers have been originated in nine African languages in collaboration with Molteno Institute for Language and Literacies, Nelson Mandela Institute for Education and Rural Development, Room to Read South Africa, and Saide. All resources are developed as Open Education Resources (OER).



NELSON MANDELA
INSTITUTE FOR
EDUCATION AND
RURAL DEVELOPMENT



Room to Read®
World Change Starts with Educated Children®

Your attribution should include the following:

Title: Lihle le Lwandle ka marega

Author/s: Ndivhuho Mutsila

Translator/s: Dikeledi Queen Shai

Illustrator/s: Vusi Malindi


Assurer/s: Connie Makgabo

Language: Sepedi



© Zenex Foundation - Saide 2023

CC BY includes the following elements:

BY  - Credit must be given to the creator

