

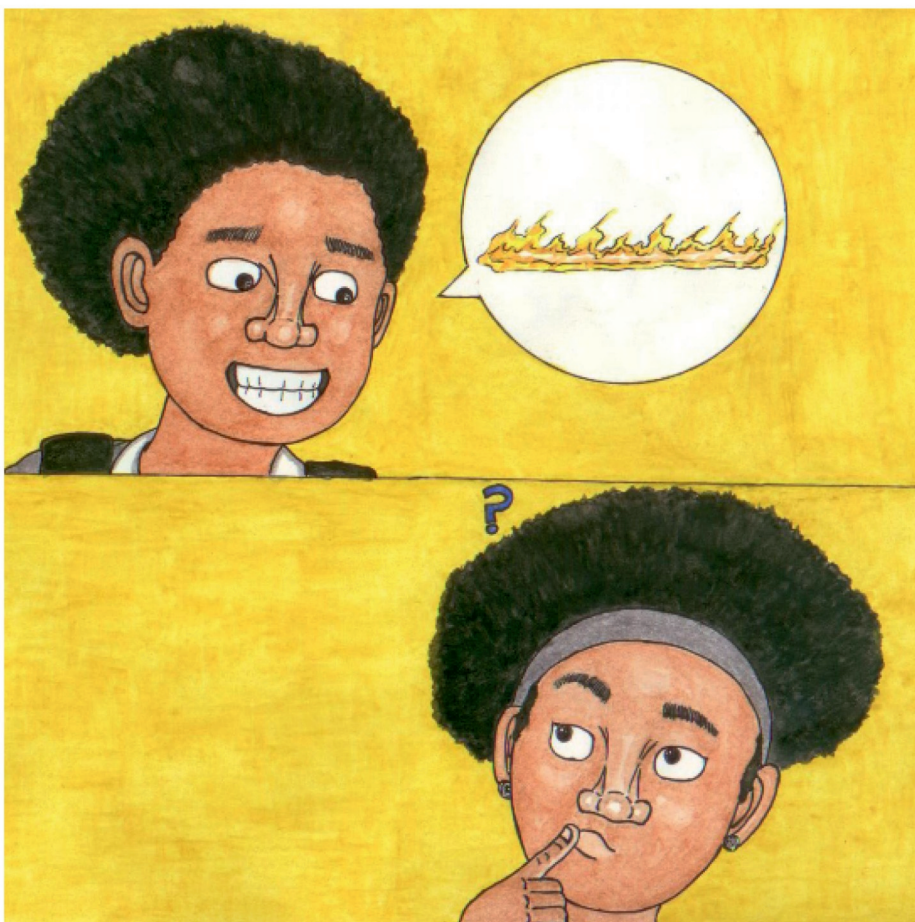
"Itlhaganele Naka, re tllile go nna thari kwa sekolong!" Nala a tsibosa.

"Ke gatsetse! A re eme re gotse molelo, go ithutafatsa," ga bua Naka.



"A o lebetse gore mmangwane o re boletse, re se tshameke ka molelo?" Nala a botsa.

"Ke mo utlwile, fela ga re ka fa gare ga ntlo!" Naka a araba.

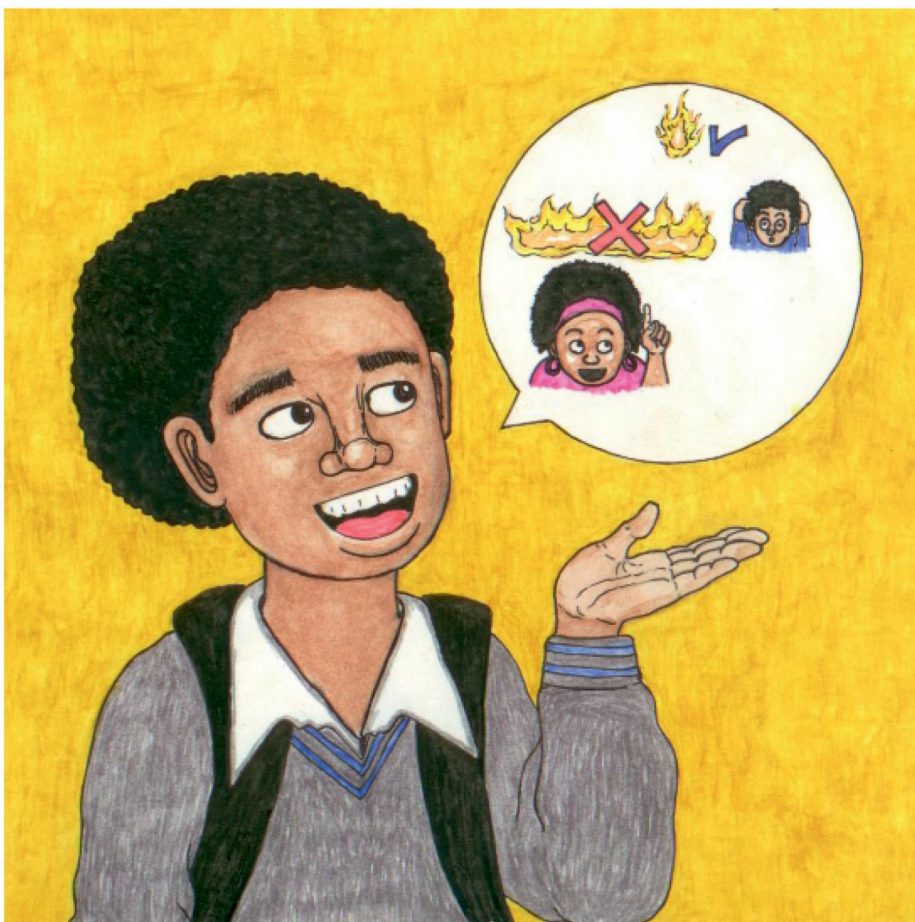


Nala a re, "Re mo mmileng, fela go santse go le kotsi. Molelo o ka anama ka bonako mme wa dira tshenyo thata."

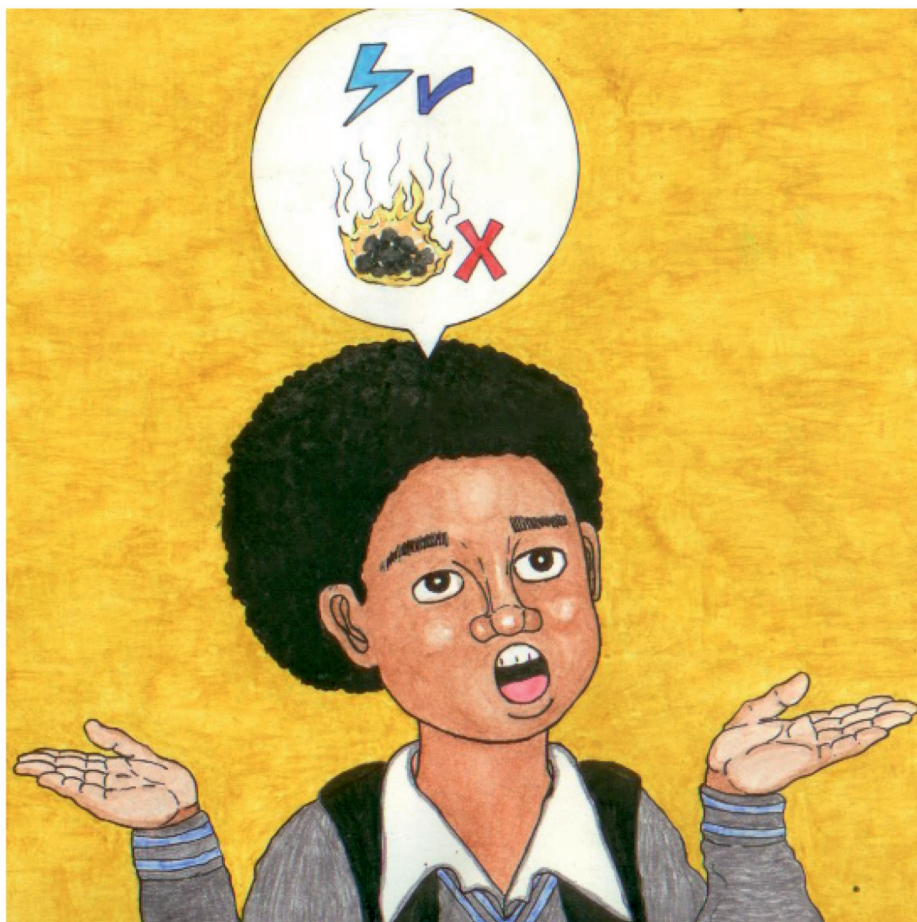
Naka a a akanya ka se.



“Bogologolo, molelo e ne e le mokgwa fela wa go thutafatsa le lesedi go botlhe. Batho ba o dirisa go apaya, go thutafatsa le go bonesa.” Naka a bua.

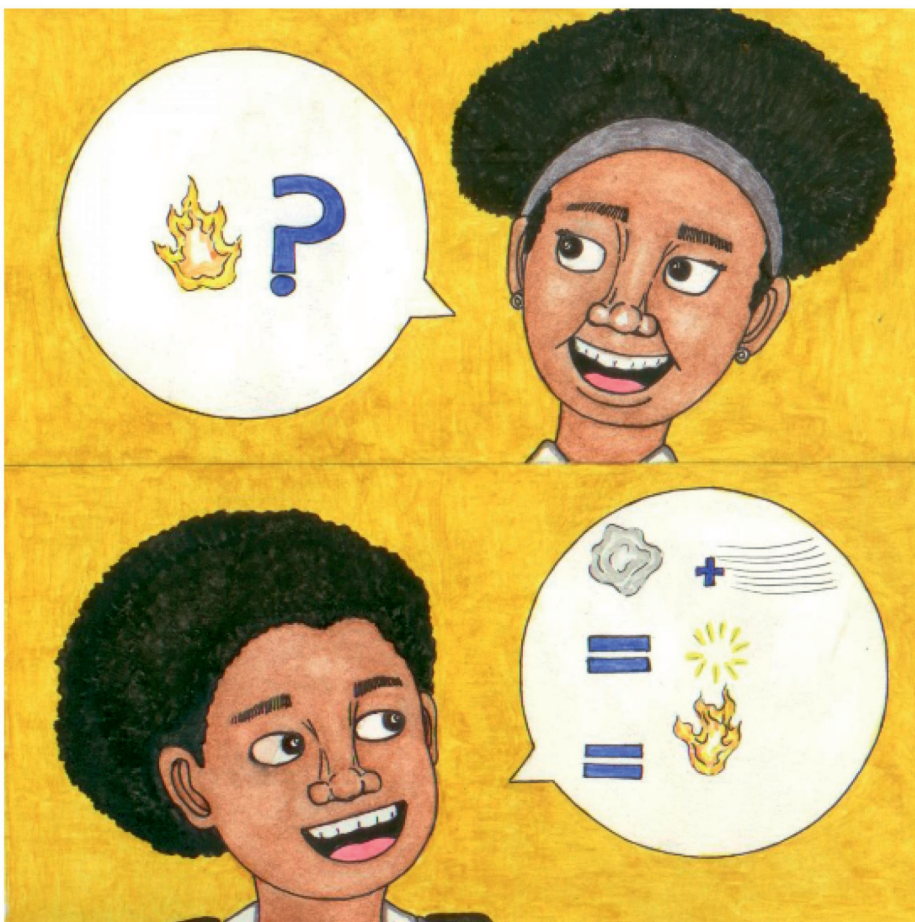


Nala a araba, "Molelo ke sediriswa sa botlhokwa, fela o thata go o laola. Ke ka moo mmangwane a reng, bana ba se tshube molelo. Botlhe re nne kelotlhoko."



Nala a tswelela, "Motlakase o bolokesebile gape o phepa,  
gona le go fisa dikgong le malatlha,"

"Go fisa dipeso go baka kgotlelego," Nala a tlaletsa.



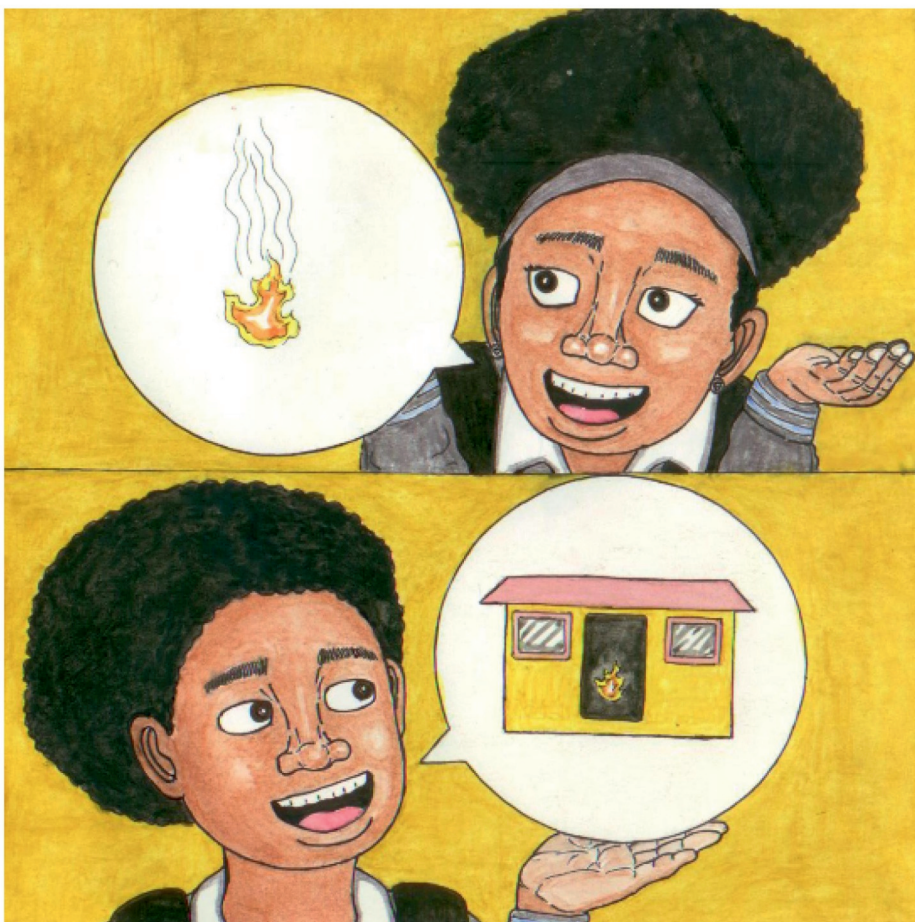
Naka a botsa, "A o itse gore molelo o simolola jang?"

"Nako dingwe dituki le mowa di a kopana, di dira tlhase. Molelo o simolola jalo," Nala a tlhalosa.



“Fa mowa le dituki di kopana ka bonako, ka themphereitšha e e siameng, molelo o simolola go tuka. Sekao, go forogotlha dithupana mmogo, kgotsa go kgwara mokgwaro.”





“Molelo o ntsha mosi,” Naka a bua.

Nala a dumela, “Ee, ke ka moo re sa tshwanelang go tshuba molelo ka fa ntlong. Ga go a siama go hema mosi.”



Nala le Naka ba kwa sekolong.

“Gakologelwa, o seka wa tlogela kerese kgotsa molelo o tuka. Molelo o ka fisa dintlo le batho!” Nala a tshwaela.



## —Dipotso

1. Ke mang a batlang go gotsa molelo?
2. Neela tiriso di le 3 tsa molelo?
3. Neela mathata a le mararo ka ga molelo?
4. Kgotlelego ke eng?
5. Neela mekgwa e 2 ya pabalesego mo molelong.
6. Batla mafoko mangwe a a kayang 'molelo' ka maleme a mangwe. Thala setshwantsho ka mafoko ao.