

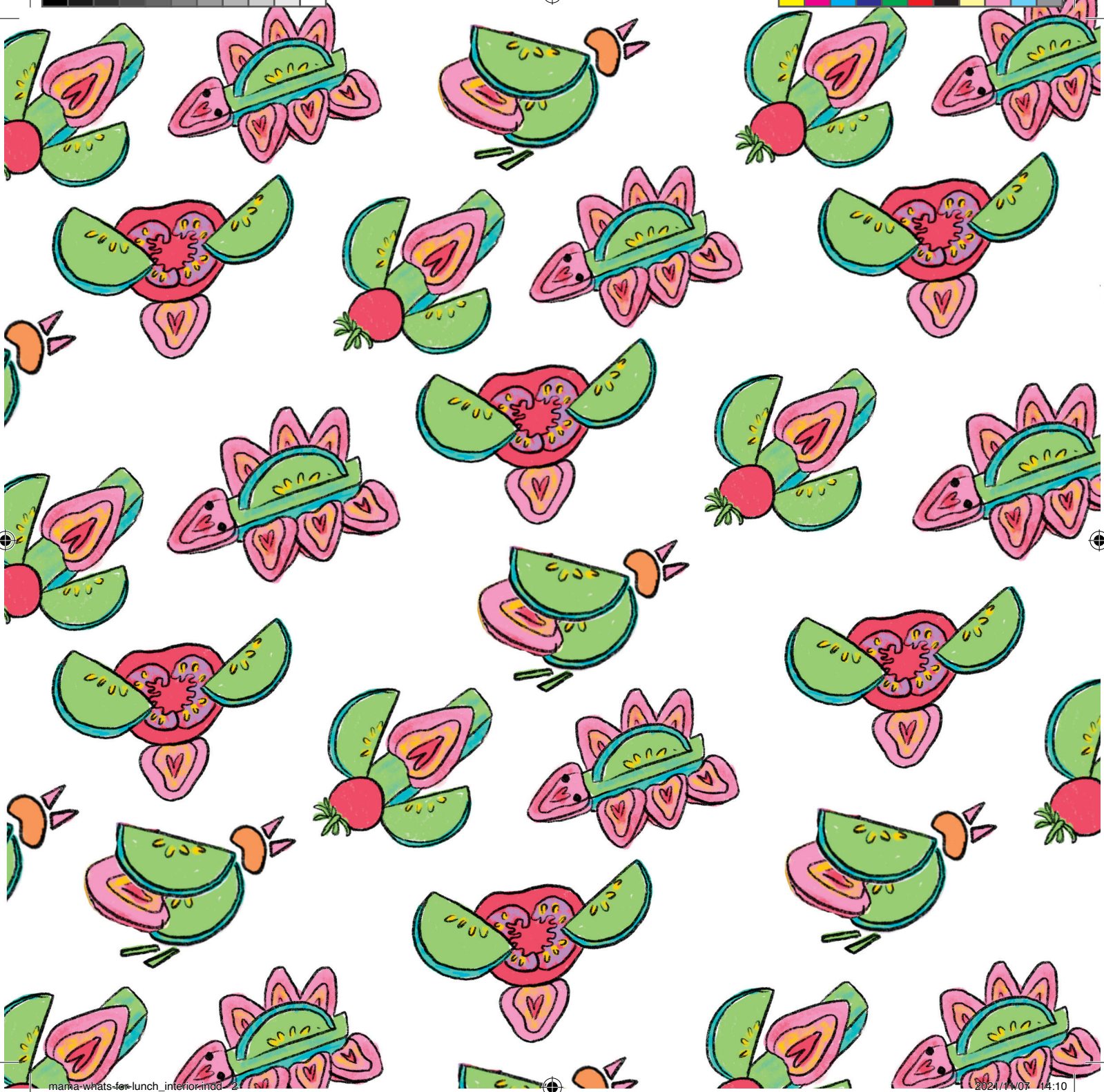


Mme, re ja eng bakeng sa  
dijo tsa motsheare?

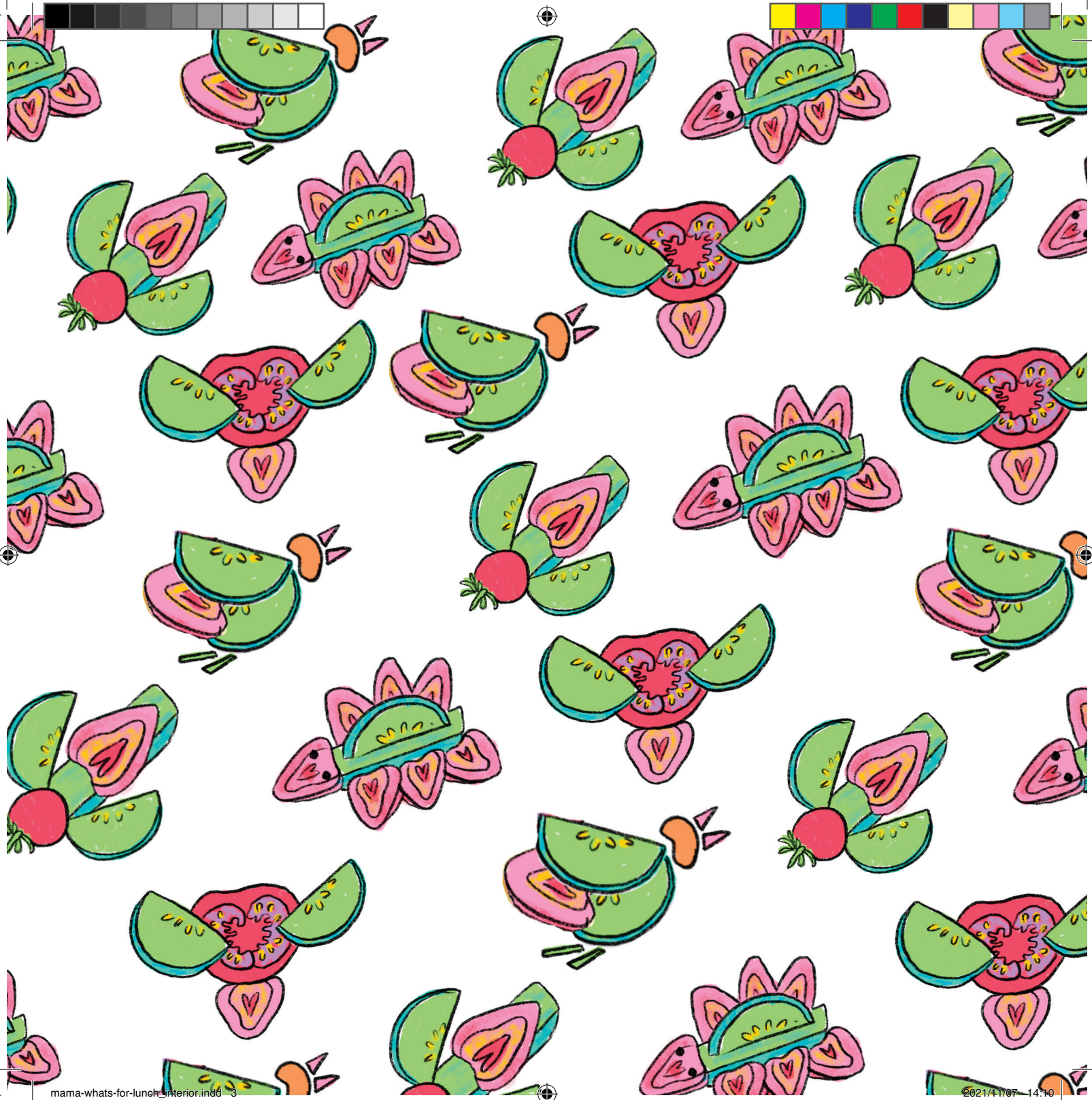
Buka ena ke ya

---











*Every child should own a hundred books by the age of five. To that end, Book Dash gathers creative professionals who volunteer to create new, African storybooks that anyone can freely translate and distribute. To find out more, and to download beautiful, print-ready books, visit [bookdash.org](http://bookdash.org).*

*Mme, re ja eng bakeng sa dijo tsa motsheare?  
(Mama, What's For Lunch?)*

Illustrated by Heather Jenkins

Written by Sally Partridge

Designed by Mballi Mauda

Edited by Melissa Fagan

Translated by Mpho Hlabela Mngxitama

with the help of the Book Dash participants in the Virtual Book Dash on 18 September 2021.

ISBN: 9781776324231

This work is licensed under a Creative Commons Attribution 4.0 Licence (<http://creativecommons.org/licenses/by/4.0/>). You are free to share (copy and redistribute the material in any medium or format) and adapt (remix, transform, and build upon the material) this work for any purpose, even commercially. The licensor cannot revoke these freedoms as long as you follow the following license terms:

**Attribution:** You must give appropriate credit, provide a link to the license, and indicate if changes were made. You may do so in any reasonable manner, but not in any way that suggests the licensor endorses you or your use.

**No additional restrictions:** You may not apply legal terms or technological measures that legally restrict others from doing anything the license permits.

**Notices:** You do not have to comply with the license for elements of the material in the public domain or where your use is permitted by an applicable exception or limitation.

**No warranties are given.** The license may not give you all of the permissions necessary for your intended use. For example, other rights such as publicity, privacy, or moral rights may limit how you use the material.





Mme, re ja eng  
bakeng sa dijo  
tsa motsheare?

Heather Jenkins | Sally Partridge  
Mbali Mauda









“Potlaka, Thabo. Mme o lokisa dijo tsa motsheare,” ho bitsa Tumi.







“O ya kae, Thabo?”





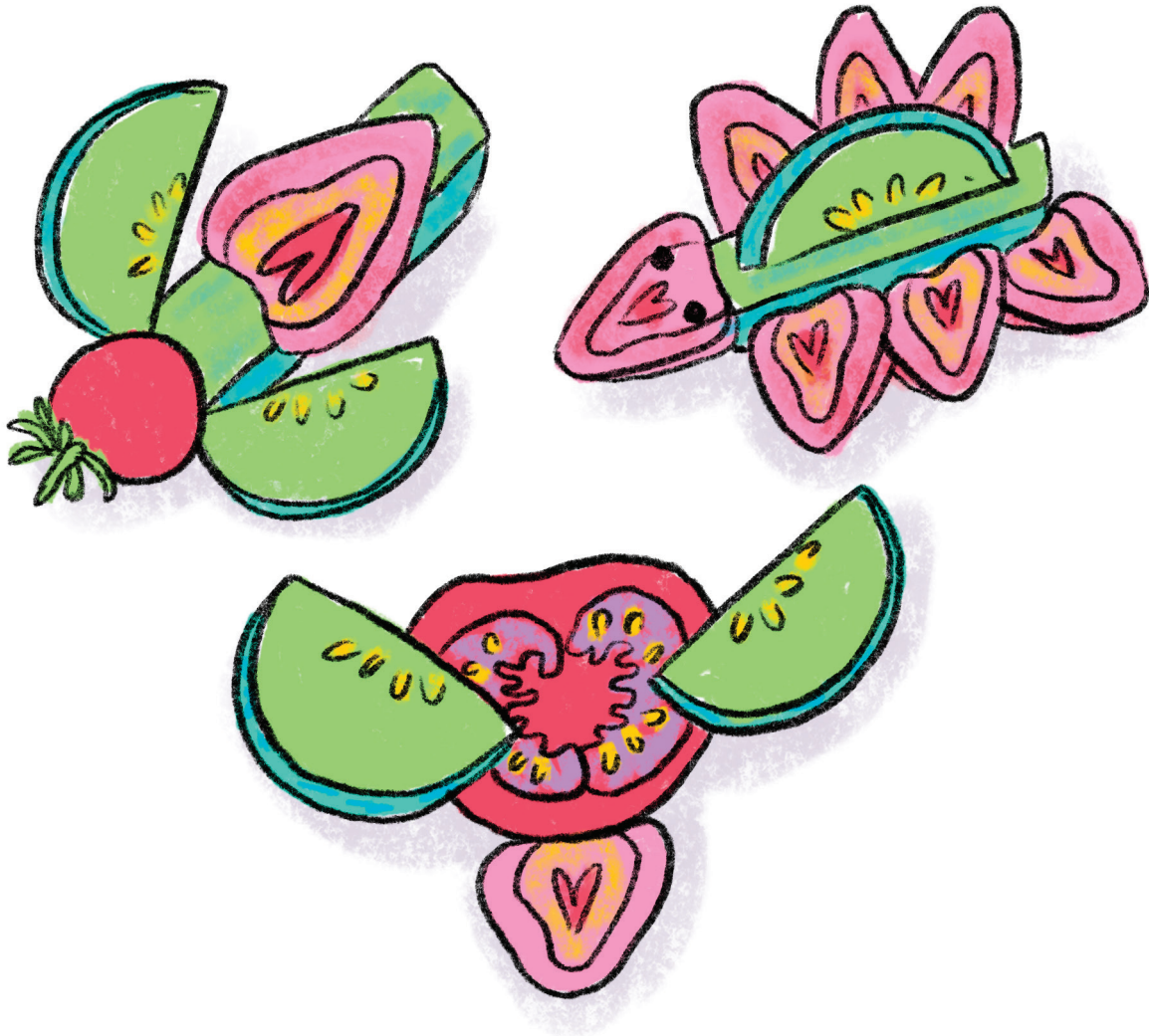
Metswalle ya hae ha e utlwise hore na ke hobaneng a kgetha dijo tsa motsheare ho ena le papadi ya bona, empa Thabo o na le lekunutu.





Dijo tsa motsheare tsa Mme di kgethehile.



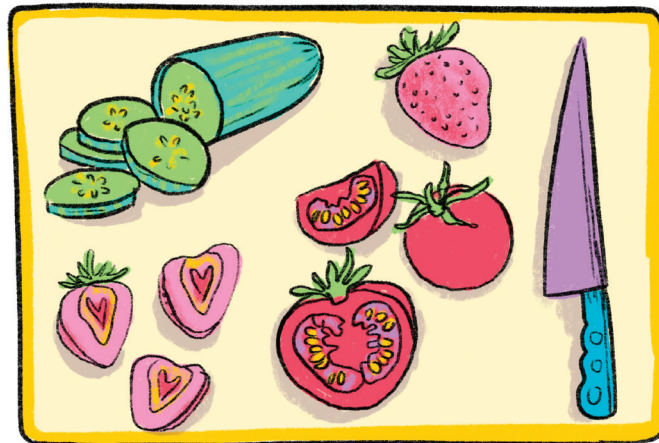




Ka Mantaha, Mme o pheha a bopa dijo tsa bona jwalo ka ha eka ke dikokonyana tse nyeunyang tse kgasang, seo se etsa hore Tumi a bokolle ke ho tshoha.

“JO WEEE!”

Empa ke ditholwana le meroho tse monate, ebile ha di tshose ho hang.





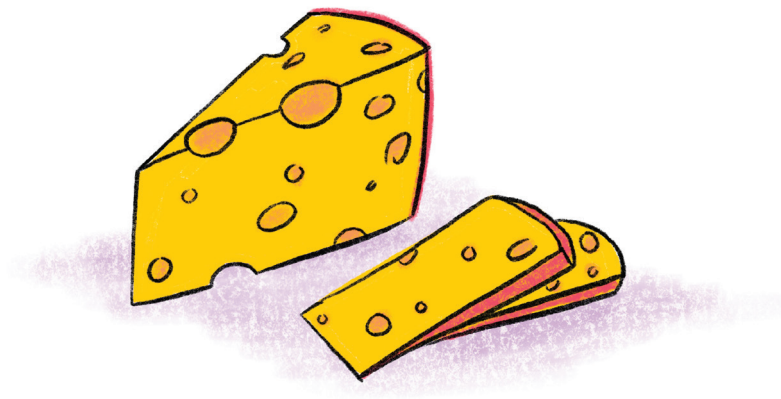


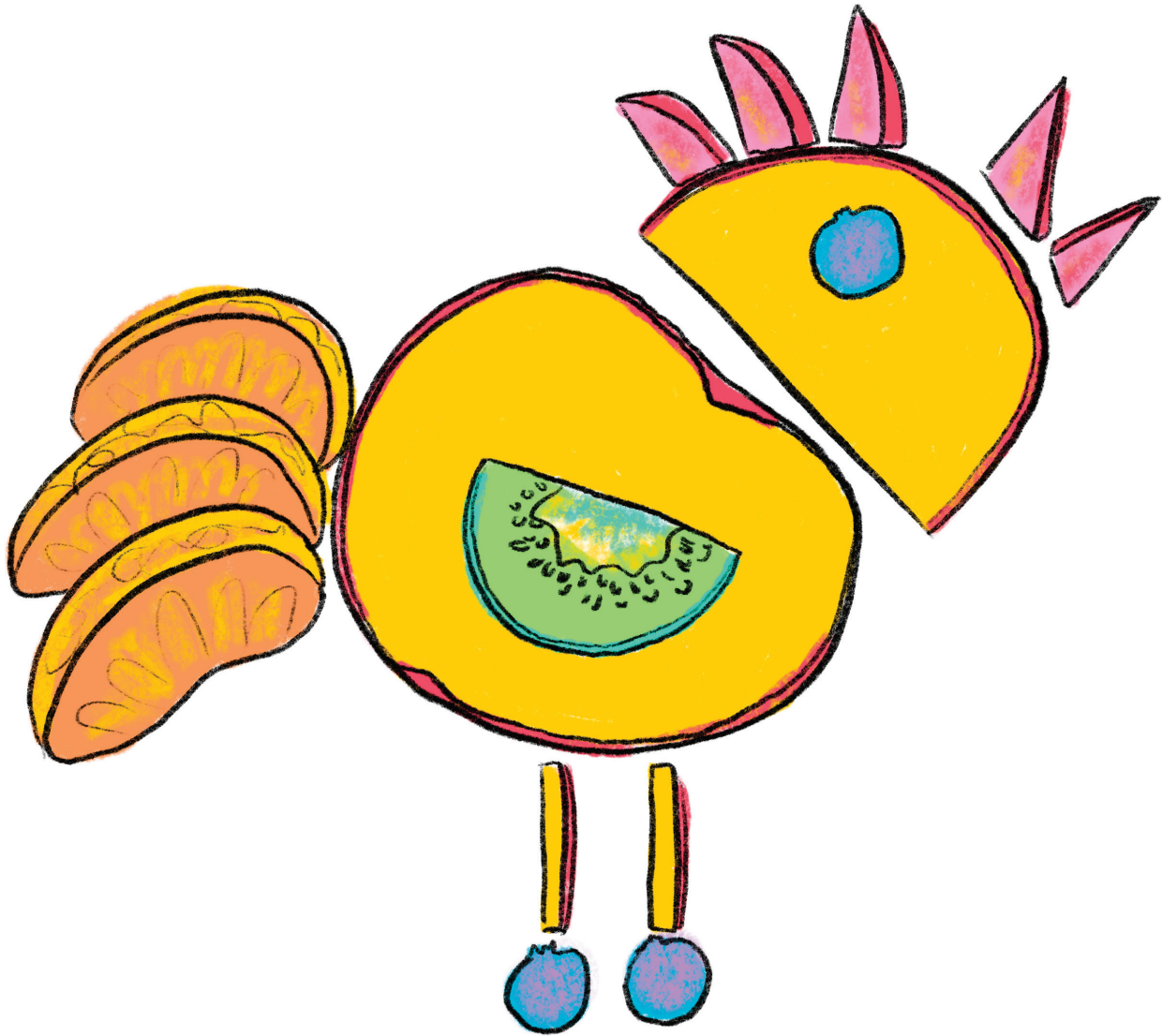


Ka Labobedi, o ba etsetsa tau e rorang haholo hoo e bileng e thothometsang ntlo.

“ROOOOAAARR!”

Empa e le fela phasta le kase tse hlabosang.



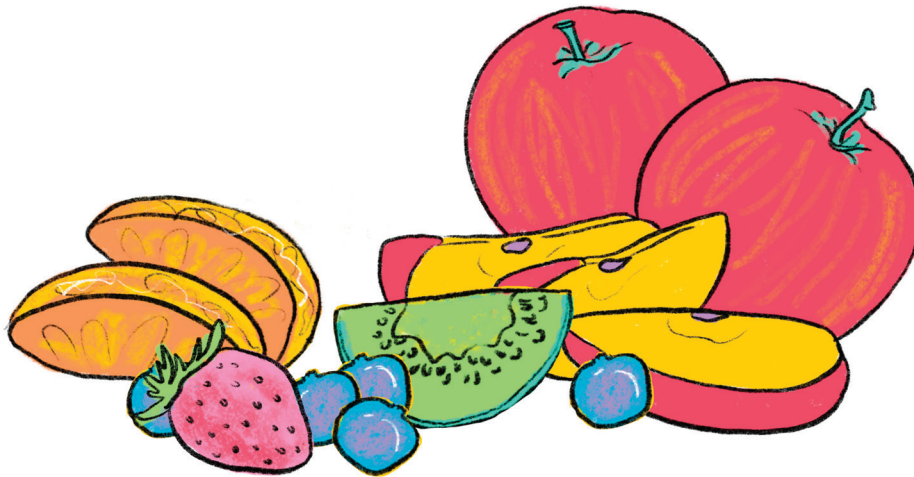


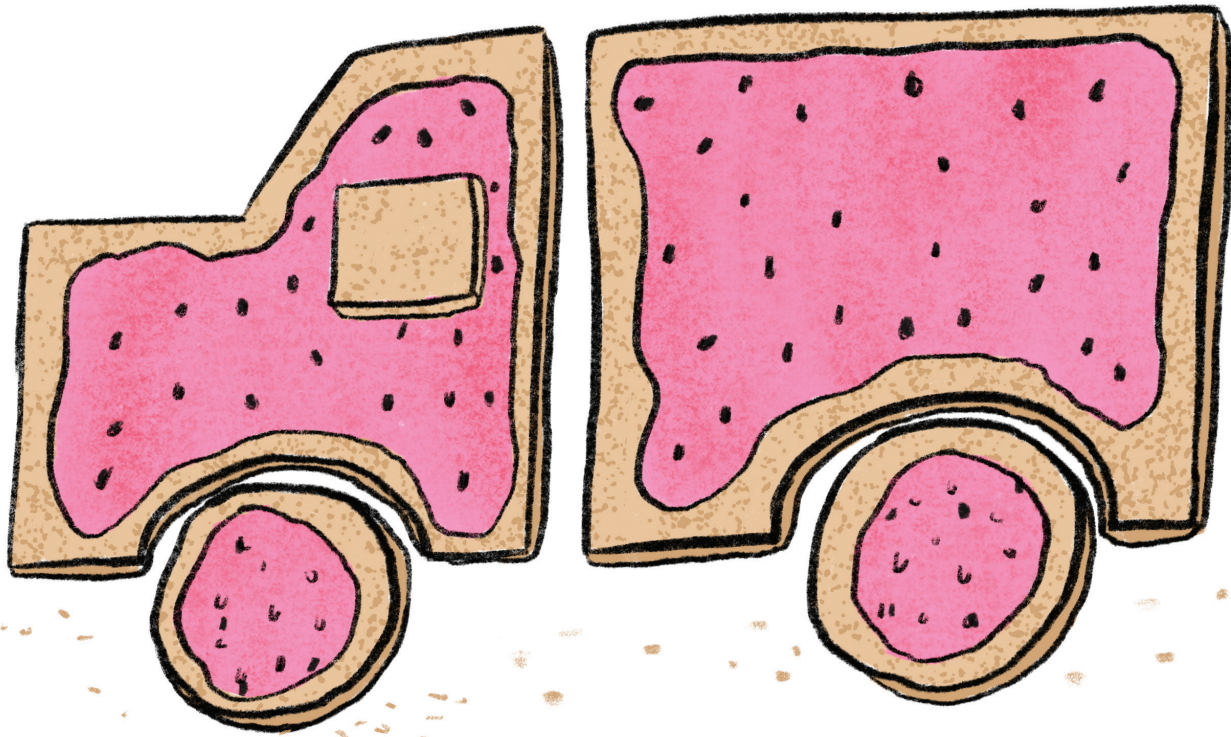


Ka Laboraro, Mme o pheha a bopa kgoho  
e tsosang bohle baahisani ba seterata.

“KOKOLO KOLOOOO!”

Empa fela e le poleiti ya ditholwana tse nang  
le lero.







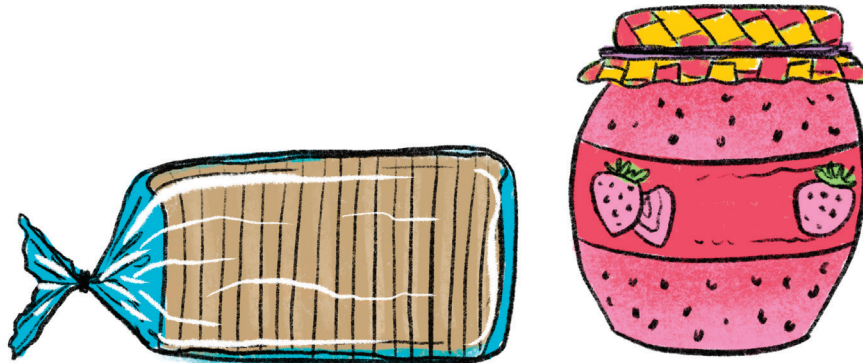


Ka Labone, Mme o bopa dijo tsa teraka  
e lerata haholo.

Thabo le Tumi ba ikwala ditsebe.

**“VROOOOOM!”**

Empa fela e le borotho ba samentjhisi ya jeme  
ya monokotshwai e tswekere.







Ka Labohlano, Mme o bopa dijo tsa seratswana se setle se nang le dipalesa, dinonyana le tsona dikokonyana.

“TSWII TSWII!”

Empa ke papa e hlabosang, dinawa le salate e romotsehang.









“Mme, re ja eng bakeng sa dijo tsa motsheare?”  
ho botsa Tumi.

“Ehlile Mme,” ho bolela Thabo. “O re phehela  
eng kajeno?”









Thabo le Tumi ba hloleha le ho itshwara  
metsotswana.

Mala a bona a korotla. Qetellong, Mme  
o se a lokile.

“Ke eng hoo Mme?” ho botsa Thabo a itatswa  
melomo.







Ke Thabo, Tumi le Mme!

“Mmm, thatohatsi ya rona, ke setjhu le raese tsa hao tse tummeng.”

“Re a leboha, Mme!”









Ebe Mme o tla etsa eng ka Sontaha?





