



Ba niawu bazali
boni?

Namoni ata niawu
moko te, bango
nionso babungi.



Niwu azali boni?

Namoni kaka
niwuwu moko azali
awa.



Ba niawu bazali
boni?

Namoni ba
niawu bazali
mibale.



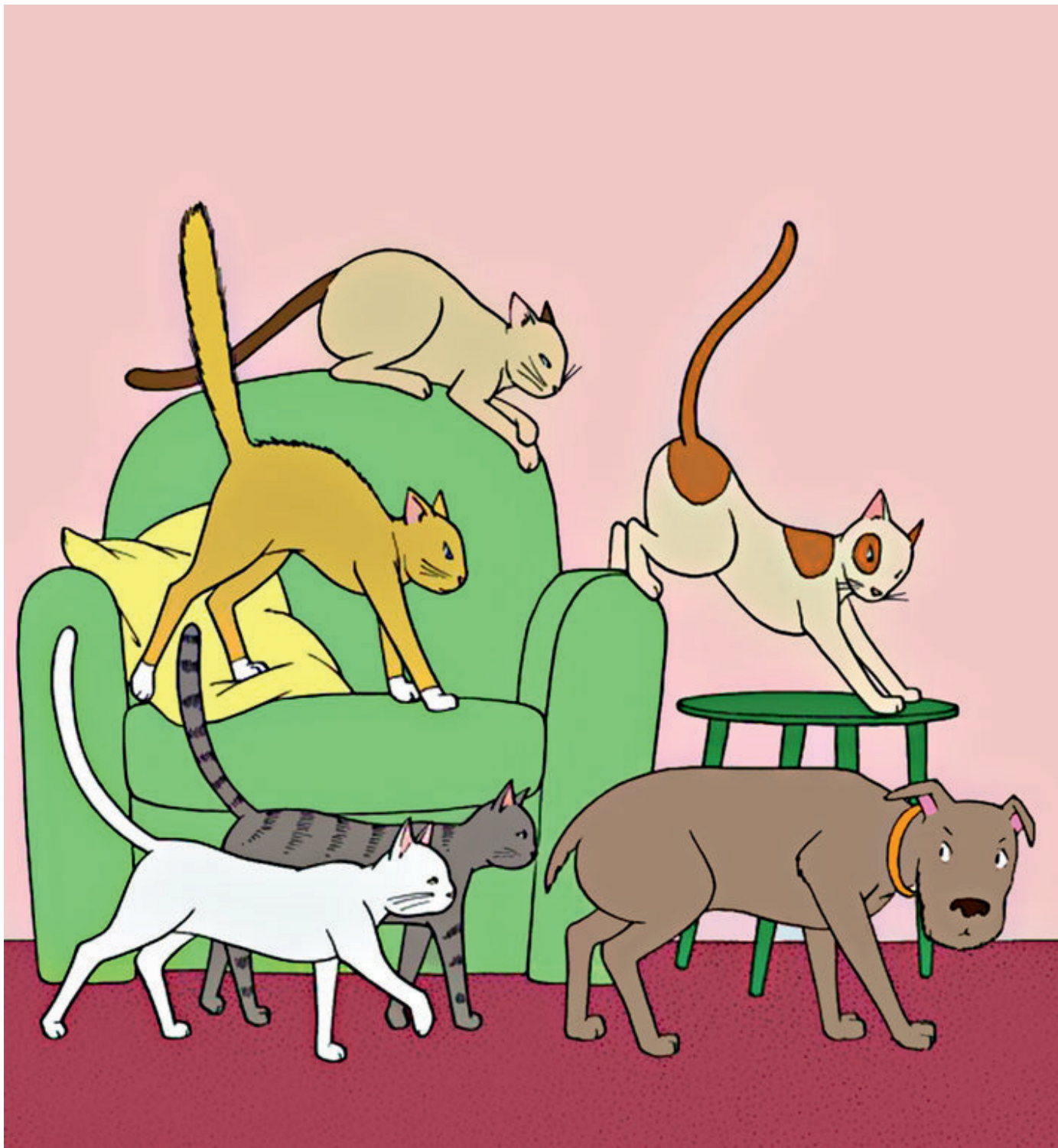
Ba niawu bazali
boni?

Namoni ba
niawu bazali
misato.



Ba niawu bazali
boni?

Namoni ba
niawu bazali minei.



Ba niawu bazali
boni?

Namoni ba
niawu bazali
mitano.



Ba niawu bazali
boni?

Namoni ba
niawu bazali
motoba.



Ba niawu bazali
boni?

Namoni ba
niawu bazali
sambo.



Ba niawu bazali
boni?

Namoni ba
niawu bazali
muambe.



Oyo nini
nakomona!

Niawu
akangami likolo ya
nzete, nakoya
kobikisa ye.



Maman, tokoki
kobomba ye kaka
mbala moko?

Ba niawu bazali
boni?

Libua.

