



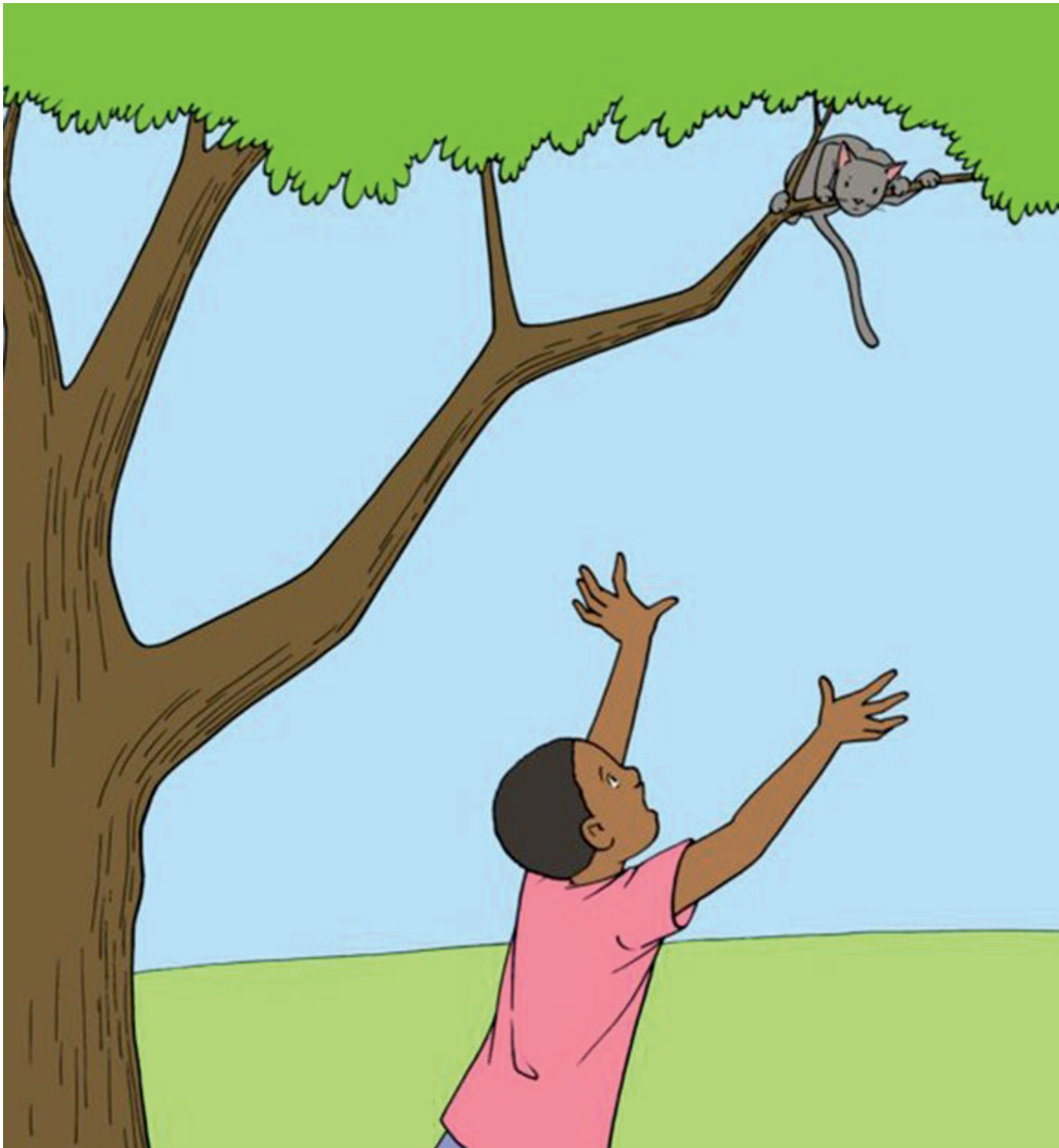
Selemenge alingaka niawu. Ba niawu bazali ebele na ndako.



Selemenge azali na niawu moko ya moyindo. Niawu oyo aliaka biloko ebele.



Selemenge azali na niawu moko ya monene. Niawu oyo aliaka biloko nioso.



Niawu ya misato, akimi  
na nzete. Niawu  
akangemi likolo ya  
nzete.

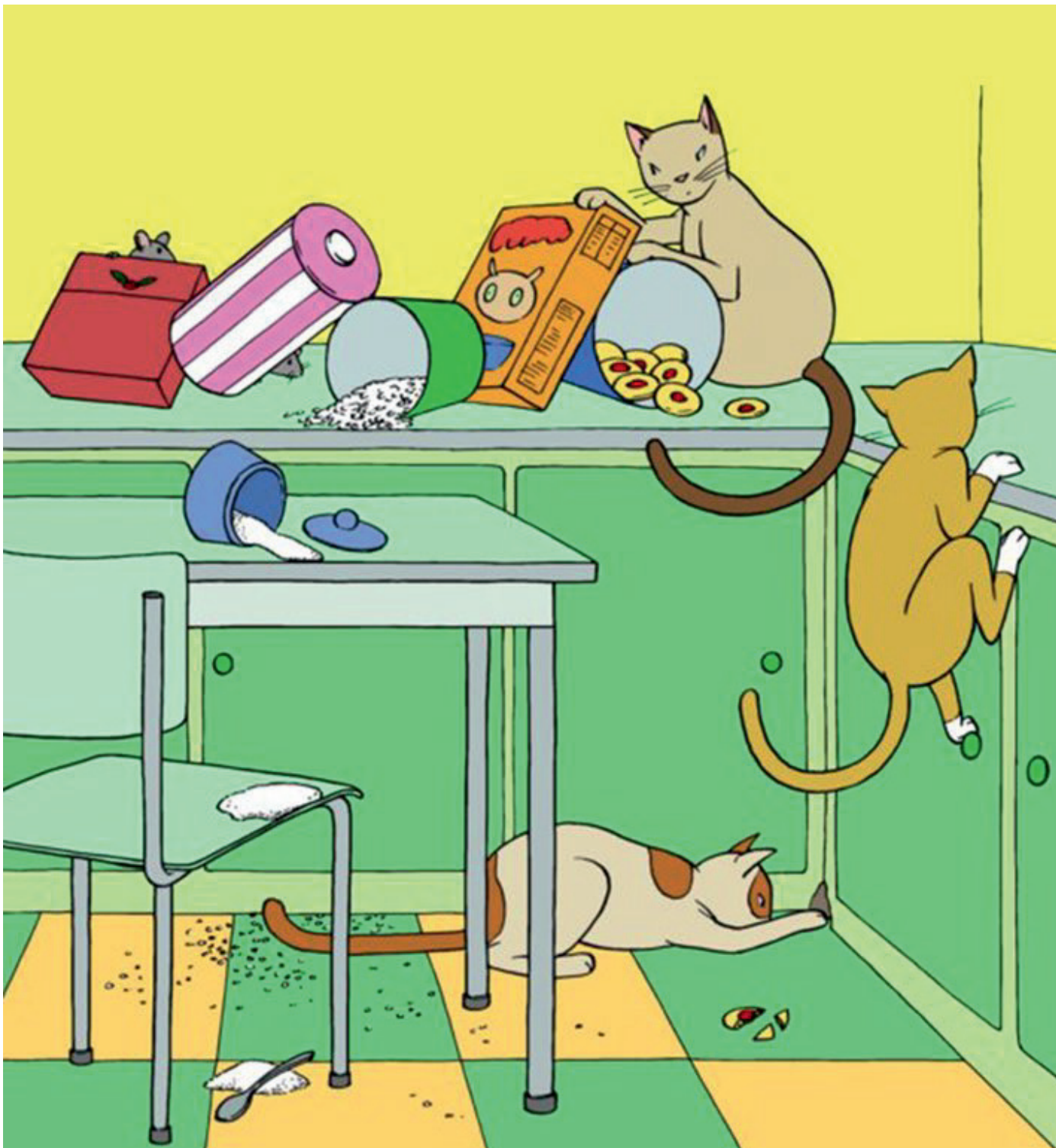


Selemenge amati na  
nzete, akangemi na  
nzete na niawu.

Maman ya Selemenge  
aye kosalisa bango  
bakita.



Selemenge azali na ba niawu mibale ya bolembu, balali libanda na moyi mokolo mobimba.



Selemenge azali na ba niawu misato na mosala. Bakangi punku na kikuku na butu.

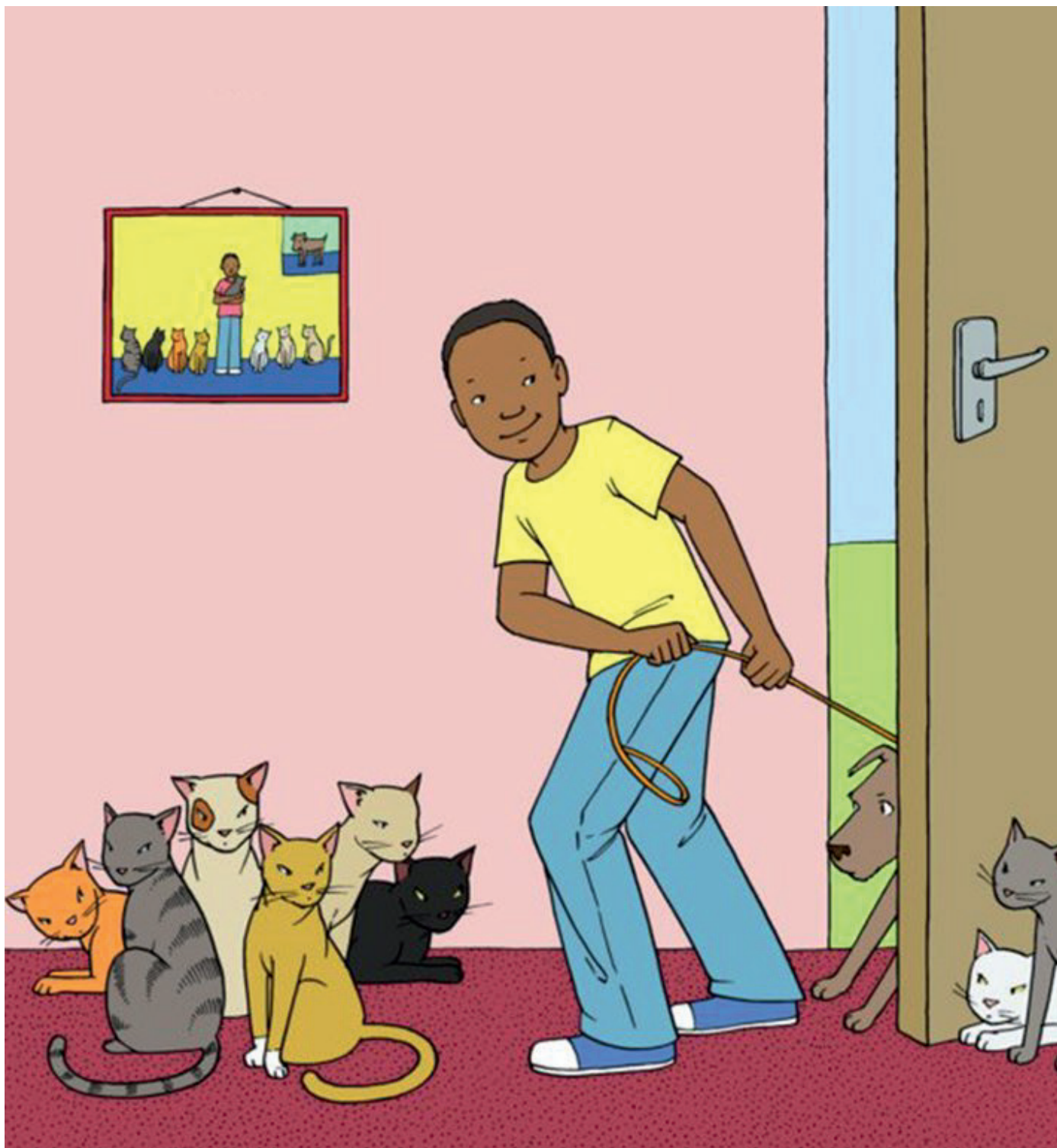


Selemenge azali na mbwua moko. Kombo na ye Lirafi. Lirafi azali na moninga te. Ye alobi.





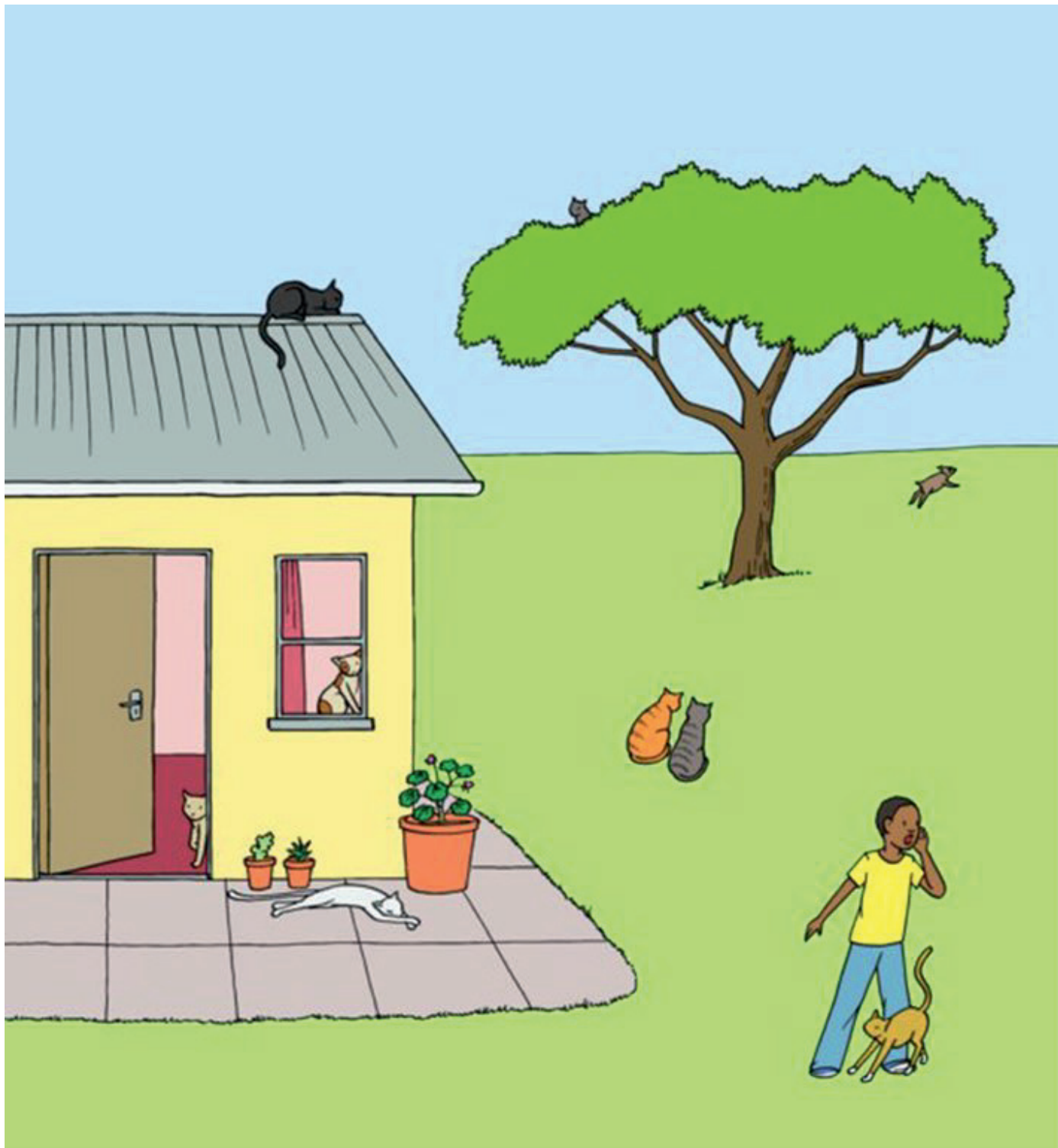
Selemenge ba niawu  
na yo balingi Lirafi te.  
Babengani ye libanda  
ya ndako. Lirafi akimi  
mosika.



Selemenge amoni  
Lirafi pe amemi ye na  
ndako. Ba niawu  
basepeli te. Balingi  
komona Lirafi lisusu te.



Selemenge azali na ba niawu boni? Azali na bango muambe.



Selemenge azali na ba mbwua boni? Azali na mbwua moko. Lirafi azali wapi sikoyo?

Ozali na ba niawu boni na ndako?  
Ozali na ba mbwua boni na ndako?





