

What is wrong child?

Writer: Ursula Nafula

Illustration: Wiehan de Jager

Adapted By: Ursula Nafula

English, Swahili (individual language)

What is wrong child? / Mtoto, shida ni
nini?

Writer: Ursula Nafula

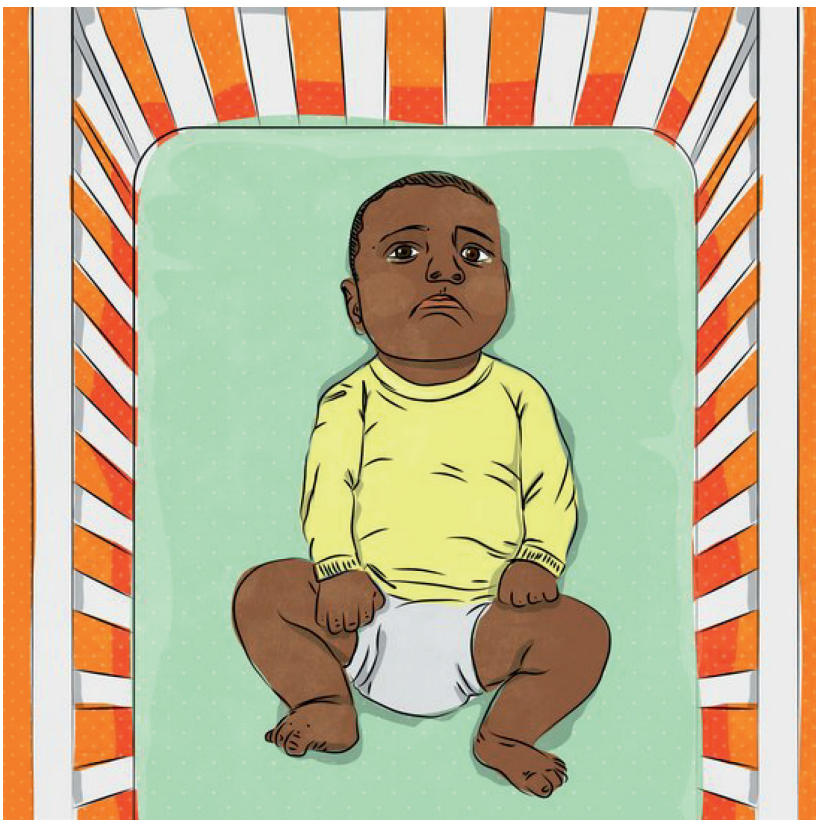
Illustration: Wiehan de Jager

Adapted By: Ursula Nafula

Copyright © 2016, African Storybook Initiative

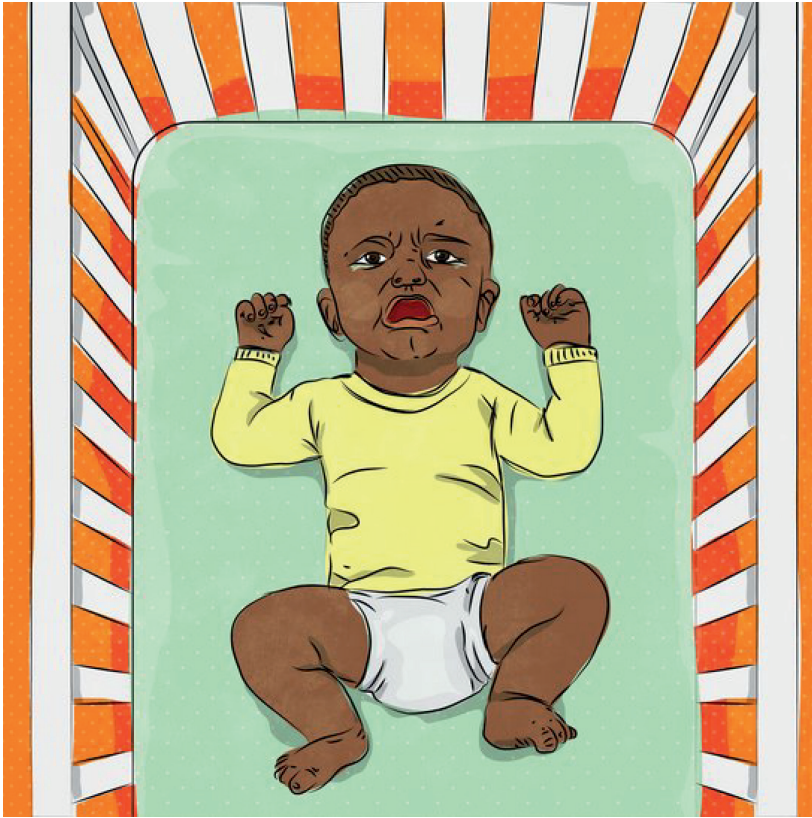


You are free to make commercial use of this work. You may adapt and add to this work. You must keep the copyright and credits for authors, illustrators, etc.



This is Matende.

Huyu ni Matende.



Matende cried all the time.

Matende alilia kila wakati.



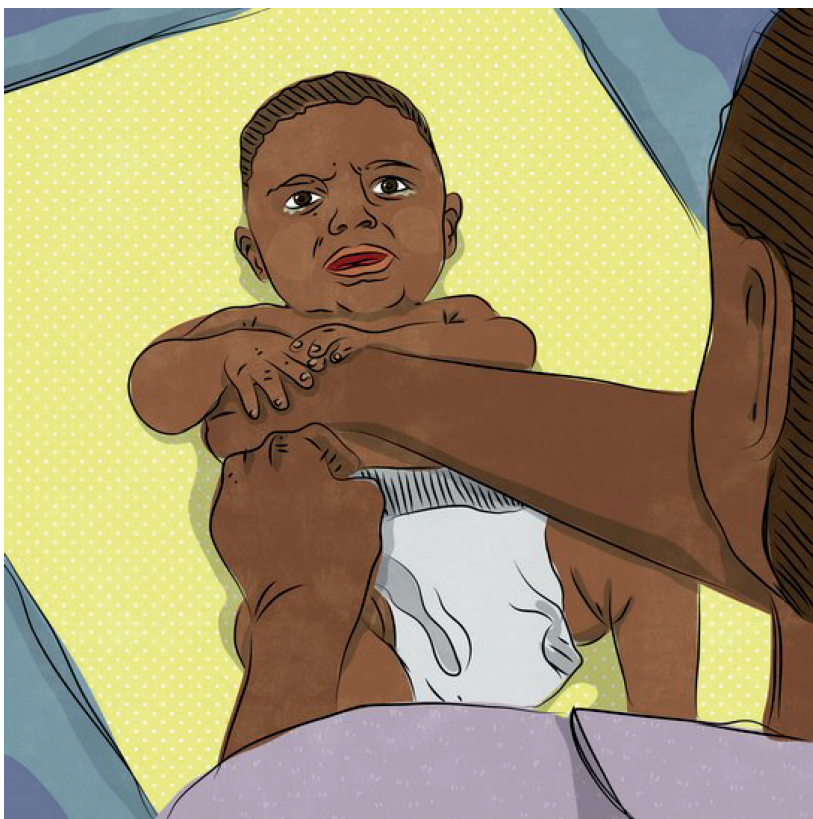
When his mother fed him,
Matende cried.

Mamake alipomnyweshwa
maziwa, Matende alilia.



When Matende was put
down to rest, he still cried.

Matende alipowekwa
kupumzika, bado alilia.



When his mother changed his nappies, Matende continued to cry.

Mamake alipobadilisha pampa, Matende aliendelea kulia.



When his mother carried
him on her shoulder,
Matende cried more.

Mamake alipombeba begani,
Matende alilia zaidi.



When he fell asleep,
Matende looked like he
would start to cry again.

Alipopatwa na usingizi, Matende
alionekana kuwa angeenza kulia
tena.



Matende's mother looked
at her son.

She did not know what was
wrong with him.

Mamake Matende alimwangalia
mwanawe. Hakujuu kilichomsumbua.

